

SMPD3 Rabbit Polyclonal Antibody



CAB10197

Product Information

Size:

20uL, 50uL, 100uL, 200uL

Observed MW:

80kDa

Calculated MW:

70kDa/71kDa

Applications:

WB

Reactivity:

Human, Mouse, Rat

Antibody Information

Recommended dilutions:

WB 1:1000 - 1:3000

Source:

Rabbit

Isotype:

IgG

Purification:

Affinity purification

Protein Background

Immunogen information

Gene ID:

55512

Uniprot

Q9NY59

Synonyms:

SMPD3; NSMASE2

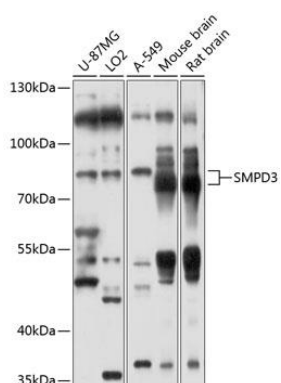
Immunogen:

Recombinant fusion protein containing a sequence corresponding to amino acids 416-655 of human SMPD3 (NP_061137.1).

Storage:

Store at -20°C. Avoid freeze / thaw cycles. Buffer: PBS with 0.02% sodium azide, 50% glycerol, pH7.3.

Product Images



Western blot analysis of extracts of various cell lines, using SMPD3 antibody (CAB10197) at 1:1000 dilution. Secondary antibody: HRP Goat Anti-Rabbit IgG (H+L) (CABS014) at 1:10000 dilution. Lysates/proteins: 25ug per lane. Blocking buffer: 3% nonfat dry milk in TBST. Detection: ECL Basic Kit (CABM00020). Exposure time: 10s.