

CLDN5 Rabbit Polyclonal Antibody



CAB10207

Product Information

Size:

20uL, 50uL, 100uL, 200uL

Observed MW:

27kDa

Calculated MW:

23kDa

Applications:

IF

Reactivity:

Human, Mouse, Rat

Protein Background

This gene encodes a member of the claudin family. Claudins are integral membrane proteins and components of tight junction strands. Tight junction strands serve as a physical barrier to prevent solutes and water from passing freely through the paracellular space between epithelial or endothelial cell sheets. Mutations in this gene have been found in patients with velocardiofacial syndrome. Alternatively spliced transcript variants encoding the same protein have been found for this gene.

Immunogen information

Gene ID:

7122

Uniprot

O00501

Synonyms:

CLDN5; AWAL; BEC1; CPETRL1; TMVCF; claudin-5

Antibody Information

Recommended dilutions:

IF 1:50 - 1:200

Source:

Rabbit

Isotype:

IgG

Purification:

Affinity purification

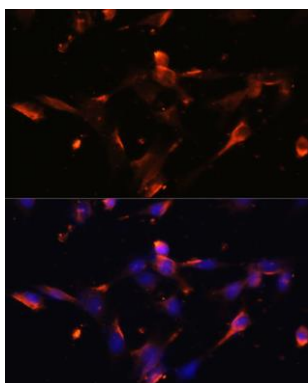
Immunogen:

Recombinant fusion protein containing a sequence corresponding to amino acids 230-303 of human CLDN5 (NP_001124333.1).

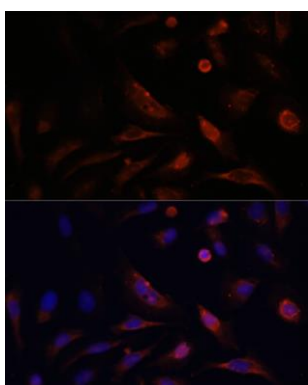
Storage:

Store at -20°C. Avoid freeze / thaw cycles. Buffer: PBS with 0.02% sodium azide, 50% glycerol, pH7.3.

Product Images



Immunofluorescence analysis of NIH/3T3 cells using CLDN5 antibody (CAB10207) at dilution of 1:100. Blue: DAPI for nuclear staining.



Immunofluorescence analysis of U2OS cells using CLDN5 antibody (CAB10207) at dilution of 1:100. Blue: DAPI for nuclear staining.