

DIAPH2 Rabbit Polyclonal Antibody



CAB10209

Product Information

Size:

20uL, 50uL, 100uL, 200uL

Observed MW:

125kDa

Calculated MW:

124kDa/125kDa

Applications:

WB

Reactivity:

Human, Mouse, Rat

Protein Background

The product of this gene belongs to the diaphanous subfamily of the formin homology family of proteins. This gene may play a role in the development and normal function of the ovaries. Defects in this gene have been linked to premature ovarian failure 2. Alternatively spliced transcript variants encoding different isoforms have been identified.

Immunogen information

Gene ID:

1730

Uniprot

O60879

Synonyms:

DIAPH2; DIA; DIA2; DRF2; POF; POF2; POF2A

Antibody Information

Recommended dilutions:

WB 1:1000 - 1:2000

Source:

Rabbit

Isotype:

IgG

Purification:

Affinity purification

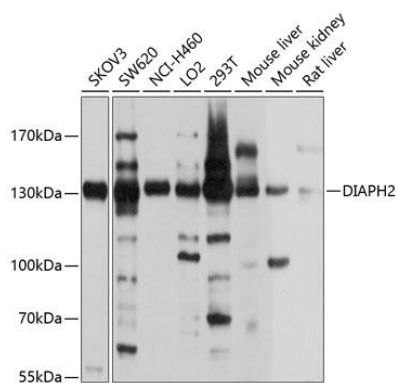
Immunogen:

Recombinant fusion protein containing a sequence corresponding to amino acids 1-120 of human DIAPH2 (NP_009293.1).

Storage:

Store at -20°C. Avoid freeze / thaw cycles. Buffer: PBS with 0.02% sodium azide, 50% glycerol, pH7.3.

Product Images



Western blot analysis of extracts of various cell lines, using DIAPH2 antibody (CAB10209) at 1:1000 dilution. Secondary antibody: HRP Goat Anti-Rabbit IgG (H+L) (CABS014) at 1:10000 dilution. Lysates/proteins: 25ug per lane. Blocking buffer: 3% nonfat dry milk in TBST. Detection: ECL Basic Kit (CABM00020). Exposure time: 15s.