

LY6E Rabbit Polyclonal Antibody



CAB10225

Product Information

Size:

20uL, 50uL, 100uL, 200uL

Observed MW:

14kDa

Calculated MW:

13kDa

Applications:

WB IF

Reactivity:

Human, Mouse

Antibody Information

Recommended dilutions:

WB 1:1000 - 1:2000 IF 1:50
- 1:200

Source:

Rabbit

Isotype:

IgG

Purification:

Affinity purification

Protein Background

Immunogen information

Gene ID:

4061

Uniprot

Q16553

Synonyms:

LY6E; RIG-E; RIGE; SCA-2; SCA2; TSA-1

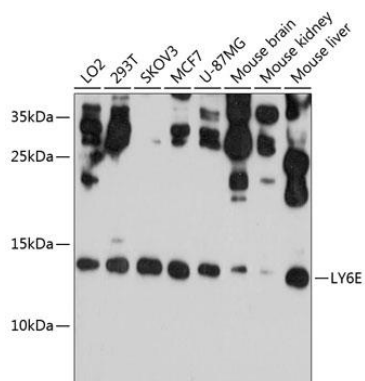
Immunogen:

Recombinant fusion protein containing a sequence corresponding to amino acids 21-101 of human LY6E (NP_002337.1).

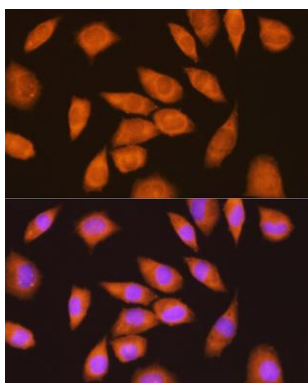
Storage:

Store at -20°C. Avoid freeze / thaw cycles. Buffer: PBS with 0.02% sodium azide, 50% glycerol, pH7.3.

Product Images



Western blot analysis of extracts of various cell lines, using LY6E antibody (CAB10225) at 1:1000 dilution. Secondary antibody: HRP Goat Anti-Rabbit IgG (H+L) (CABS014) at 1:10000 dilution. Lysates/proteins: 25ug per lane. Blocking buffer: 3% nonfat dry milk in TBST. Detection: ECL Basic Kit (CABM00020). Exposure time: 30s.



Immunofluorescence analysis of L929 cells using LY6E Rabbit pAb (CAB10225) at dilution of 1:100 (40x lens). Blue: DAPI for nuclear staining.