

MAN2A1 Rabbit Polyclonal Antibody



CAB10227

Product Information

Size:

20uL, 50uL, 100uL, 200uL

Observed MW:

131-170kDa

Calculated MW:

131kDa

Applications:

WB

Reactivity:

Human, Mouse, Rat

Protein Background

This gene encodes a glycosyl hydrolase that localizes to the Golgi and catalyzes the final hydrolytic step in the asparagine-linked oligosaccharide (N-glycan) maturation pathway. Mutations in the mouse homolog of this gene have been shown to cause a systemic autoimmune disease similar to human systemic lupus erythematosus.

Immunogen information

Gene ID:

4124

Uniprot

Q16706

Synonyms:

MAN2A1; AMan II; GOLIM7; MANA2; MANII; AManII

Antibody Information

Recommended dilutions:

WB 1:1000 - 1:2000

Source:

Rabbit

Isotype:

IgG

Purification:

Affinity purification

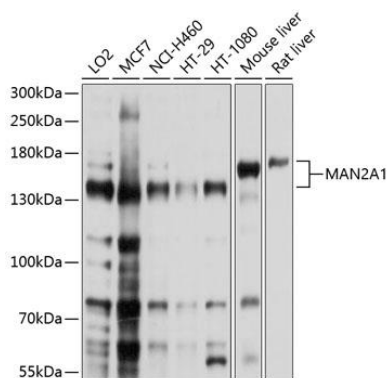
Immunogen:

Recombinant fusion protein containing a sequence corresponding to amino acids 865-1144 of human MAN2A1 (NP_002363.2).

Storage:

Store at -20°C. Avoid freeze / thaw cycles. Buffer: PBS with 0.02% sodium azide, 50% glycerol, pH7.3.

Product Images



Western blot analysis of extracts of various cell lines, using MAN2A1 antibody (CAB10227) at 1:1000 dilution. Secondary antibody: HRP Goat Anti-Rabbit IgG (H+L) (CABS014) at 1:10000 dilution. Lysates/proteins: 25ug per lane. Blocking buffer: 3% nonfat dry milk in TBST. Detection: ECL Basic Kit (CABM00020). Exposure time: 1s.