

YWHAB Rabbit Polyclonal Antibody



CAB1023

Product Information

Size:

20uL, 50uL, 100uL, 200uL

Observed MW:

28kDa

Calculated MW:

27kDa/28kDa

Applications:

WB IHC IF IP

Reactivity:

Human, Mouse, Rat

Protein Background

This gene encodes a protein belonging to the 14-3-3 family of proteins, members of which mediate signal transduction by binding to phosphoserine-containing proteins. This highly conserved protein family is found in both plants and mammals. The encoded protein has been shown to interact with RAF1 and CDC25 phosphatases, suggesting that it may play a role in linking mitogenic signaling and the cell cycle machinery. Two transcript variants, which encode the same protein, have been identified for this gene.

Immunogen information

Gene ID:

7529

Uniprot

P31946

Synonyms:

YWHAB; GW128; HEL-S-1; HS1; KCIP-1; YWHAA

Antibody Information

Recommended dilutions:

WB 1:500 - 1:2000 IHC 1:50
- 1:100 IF 1:50 - 1:200 IP
1:50 - 1:200

Source:

Rabbit

Isotype:

IgG

Purification:

Affinity purification

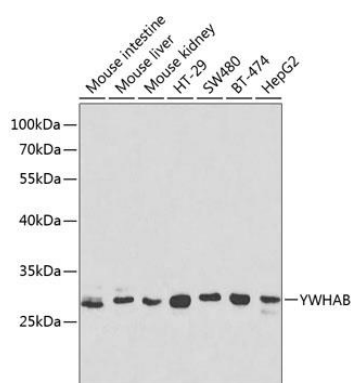
Immunogen:

Recombinant fusion protein containing a sequence corresponding to amino acids 1-246 of human YWHAB (NP_647539.1).

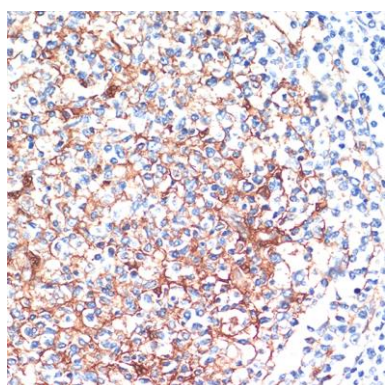
Storage:

Store at -20°C. Avoid freeze / thaw cycles. Buffer: PBS with 0.02% sodium azide, 50% glycerol, pH7.3.

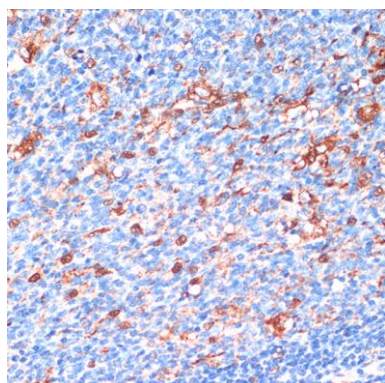
Product Images



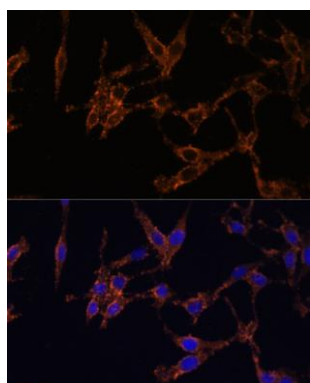
Western blot analysis of extracts of various cell lines, using YWHAB antibody (CAB1023) at 1:1000 dilution. Secondary antibody: HRP Goat Anti-Rabbit IgG (H+L) (CABS014) at 1:10000 dilution. Lysates/proteins: 25ug per lane. Blocking buffer: 3% nonfat dry milk in TBST.



Immunohistochemistry of paraffin-embedded Human tonsil using YWHAB antibody (CAB1023) at dilution of 1:200 (40x lens).



Immunohistochemistry of paraffin-embedded Human appendix using YWHAB antibody (CAB1023) at dilution of 1:200 (40x lens).



Immunofluorescence analysis of HeLa cells using YWHAB antibody (CAB1023) at dilution of 1:100. Blue: DAPI for nuclear staining.