

DMT1 Rabbit Polyclonal Antibody



CAB10231

Product Information

Size:

20uL, 50uL, 100uL, 200uL

Observed MW:

72KDa

Calculated MW:

61kDa/62kDa/64kDa/65kDa

Applications:

WB IHC IF

Reactivity:

Human, Mouse, Rat

Antibody Information

Recommended dilutions:

WB 1:1000 - 1:2000 IHC
1:50 - 1:200 IF 1:50 - 1:200

Source:

Rabbit

Isotype:

IgG

Purification:

Affinity purification

Protein Background

This gene encodes a member of the solute carrier family 11 protein family. The product of this gene transports divalent metals and is involved in iron absorption. Mutations in this gene are associated with hypochromic microcytic anemia with iron overload. A related solute carrier family 11 protein gene is located on chromosome 2. Multiple transcript variants encoding different isoforms have been found for this gene.

Immunogen information

Gene ID:

4891

Uniprot

P49281

Synonyms:

SLC11A2; AHMIO1; DCT1; DMT1; NRAMP2

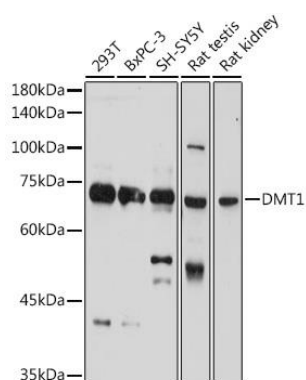
Immunogen:

Recombinant fusion protein containing a sequence corresponding to amino acids 1-100 of human DMT1 (NP_000608.1).

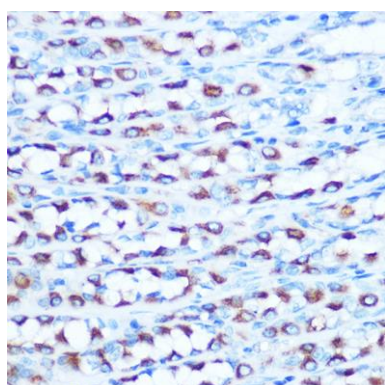
Storage:

Store at -20°C. Avoid freeze / thaw cycles. Buffer: PBS with 0.02% sodium azide, 50% glycerol, pH7.3.

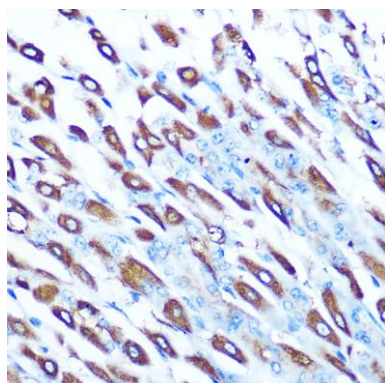
Product Images



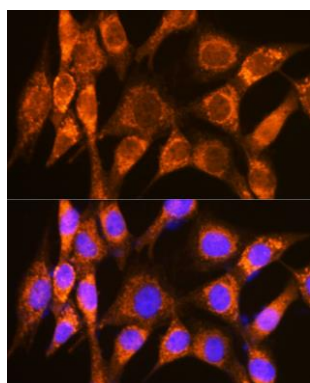
Western blot analysis of extracts of various cell lines, using DMT1 Rabbit pAb (CAB10231) at 1:1000 dilution. Secondary antibody: HRP Goat Anti-Rabbit IgG (H+L) (CABS014) at 1:10000 dilution. Lysates/proteins: 25ug per lane. Blocking buffer: 3% nonfat dry milk in TBST. Detection: ECL Basic Kit (CABM00020). Exposure time: 180s.



Immunohistochemistry of paraffin-embedded rat stomach using DMT1 Rabbit pAb (CAB10231) at dilution of 1:100 (40x lens).



Immunohistochemistry of paraffin-embedded mouse stomach using DMT1 Rabbit pAb (CAB10231) at dilution of 1:100 (40x lens).



Immunofluorescence analysis of NIH-3T3 cells using DMT1 Rabbit pAb (CAB10231) at dilution of 1:100 (40x lens). Blue: DAPI for nuclear staining.