

SEPT4 Rabbit Polyclonal Antibody



CAB10238

Product Information

Size:

20uL, 50uL, 100uL, 200uL

Observed MW:

50kDa

Calculated MW:

30kDa/38kDa/53kDa/54kDa/
55kDa/56kDa

Applications:

WB IHC IF

Reactivity:

Human, Mouse, Rat

Antibody Information

Recommended dilutions:

WB 1:200 - 1:2000 IHC 1:50
- 1:200 IF 1:50 - 1:200

Source:

Rabbit

Isotype:

IgG

Purification:

Affinity purification

Protein Background

This gene is a member of the septin family of nucleotide binding proteins, originally described in yeast as cell division cycle regulatory proteins. Septins are highly conserved in yeast, Drosophila, and mouse, and appear to regulate cytoskeletal organization. Disruption of septin function disturbs cytokinesis and results in large multinucleate or polyploid cells. This gene is highly expressed in brain and heart. Alternatively spliced transcript variants encoding different isoforms have been described for this gene. One of the isoforms (known as ARTS) is distinct; it is localized to the mitochondria, and has a role in apoptosis and cancer.

Immunogen information

Gene ID:

5414

Uniprot

O43236

Synonyms:

SEPT4; ARTS; BRADEION; CE5B3; H5; MART; PNUTL2; SEP4;
hCDCREL-2; hucep-7; septin-4

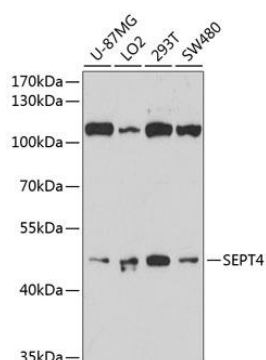
Immunogen:

Recombinant fusion protein containing a sequence corresponding to amino acids 1-100 of human SEPT4 (NP_536341.1).

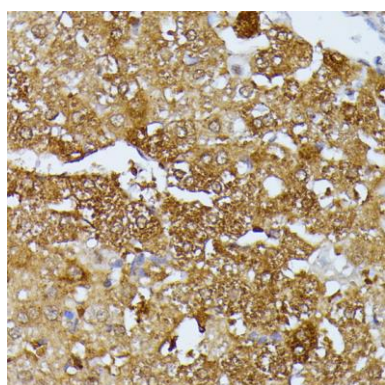
Storage:

Store at -20°C. Avoid freeze / thaw cycles. Buffer: PBS with 0.02% sodium azide, 50% glycerol, pH7.3.

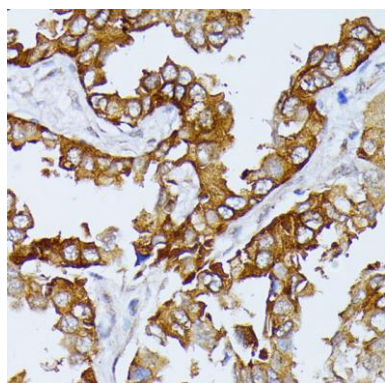
Product Images



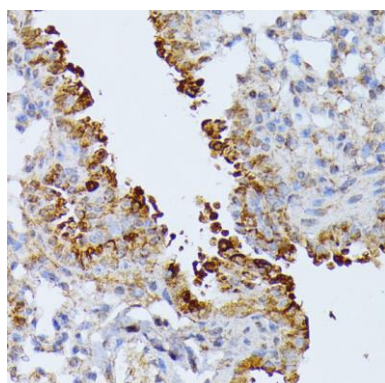
Western blot analysis of extracts of various cell lines, using SEPT4 antibody (CAB10238) at 1:1000 dilution. Secondary antibody: HRP Goat Anti-Rabbit IgG (H+L) (CABS014) at 1:10000 dilution. Lysates/proteins: 25ug per lane. Blocking buffer: 3% nonfat dry milk in TBST. Detection: ECL Basic Kit (CABM00020). Exposure time: 90s.



Immunohistochemistry of paraffin-embedded rat liver using SEPT4 antibody (CAB10238) at dilution of 1:100 (40x lens).



Immunohistochemistry of paraffin-embedded human lung cancer using SEPT4 antibody (CAB10238) at dilution of 1:100 (40x lens).



Immunohistochemistry of paraffin-embedded mouse lung using SEPT4 antibody (CAB10238) at dilution of 1:100 (40x lens).