

TMPRSS15 Rabbit Polyclonal Antibody



CAB10239

Product Information

Size:

20uL, 50uL, 100uL, 200uL

Observed MW:

113kDa

Calculated MW:

112kDa

Applications:

WB

Reactivity:

Human, Mouse

Protein Background

This gene encodes an enzyme that converts the pancreatic proenzyme trypsinogen to trypsin, which activates other proenzymes including chymotrypsinogen and procarboxypeptidases. The precursor protein is cleaved into two chains that form a heterodimer linked by a disulfide bond. This protein is a member of the trypsin family of peptidases. Mutations in this gene cause enterokinase deficiency, a malabsorption disorder characterized by diarrhea and failure to thrive.

Immunogen information

Gene ID:

5651

Uniprot

P98073

Synonyms:

TMPRSS15; ENTK; PRSS7

Antibody Information

Recommended dilutions:

WB 1:1000 - 1:2000

Source:

Rabbit

Isotype:

IgG

Purification:

Affinity purification

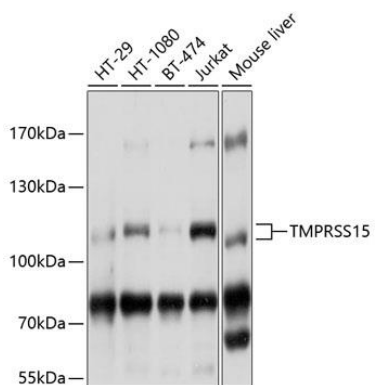
Immunogen:

Recombinant fusion protein containing a sequence corresponding to amino acids 40-300 of human TMPRSS15 (NP_002763.2).

Storage:

Store at -20°C. Avoid freeze / thaw cycles. Buffer: PBS with 0.02% sodium azide, 50% glycerol, pH7.3.

Product Images



Western blot analysis of extracts of various cell lines, using TMPRSS15 antibody (CAB10239) at 1:1000 dilution. Secondary antibody: HRP Goat Anti-Rabbit IgG (H+L) (CABS014) at 1:10000 dilution. Lysates/proteins: 25ug per lane. Blocking buffer: 3% nonfat dry milk in TBST. Detection: ECL Basic Kit (CABM00020). Exposure time: 1s.