

# TPD52 Rabbit Polyclonal Antibody



CAB10254

## Product Information

### Size:

20uL, 50uL, 100uL, 200uL

### Observed MW:

26kDa

### Calculated MW:

16kDa/19kDa/22kDa/24kDa/  
25kDa/26kDa

### Applications:

WB IHC

### Reactivity:

Human, Mouse, Rat

## Antibody Information

### Recommended dilutions:

WB 1:1000 - 1:2000 IHC  
1:50 - 1:200

### Source:

Rabbit

### Isotype:

IgG

### Purification:

Affinity purification

## Protein Background

### Immunogen information

#### Gene ID:

7163

#### Uniprot

P55327

#### Synonyms:

TPD52; D52; N8L; PC-1; PrLZ; hD52

#### Immunogen:

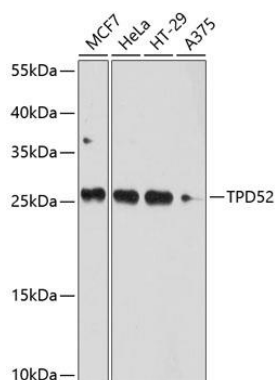
Recombinant fusion protein containing a sequence corresponding to amino acids 1-184 of human TPD52 (NP\_005070.1).

#### Storage:

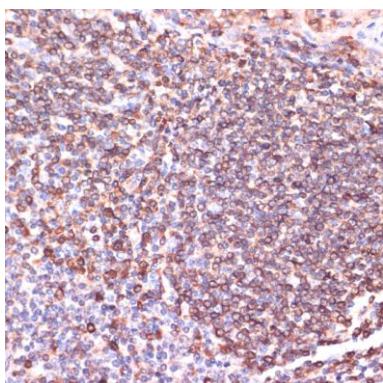
Store at -20°C. Avoid freeze / thaw cycles. Buffer: PBS with 0.02% sodium azide, 50% glycerol, pH7.3.

## Product Images

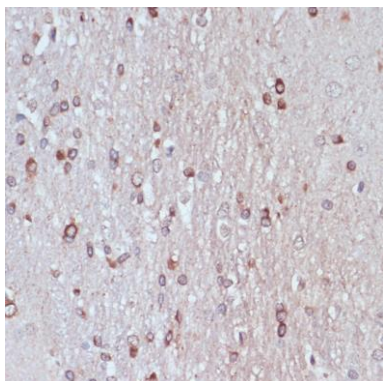
---



Western blot analysis of extracts of various cell lines, using TPD52 antibody (CAB10254) at 1:1000 dilution. Secondary antibody: HRP Goat Anti-Rabbit IgG (H+L) (CABS014) at 1:10000 dilution. Lysates/proteins: 25ug per lane. Blocking buffer: 3% nonfat dry milk in TBST. Detection: ECL Basic Kit (CABM00020). Exposure time: 10s.



Immunohistochemistry of paraffin-embedded human tonsil using TPD52 antibody (CAB10254) at dilution of 1:100 (40x lens).



Immunohistochemistry of paraffin-embedded rat brain using TPD52 antibody (CAB10254) at dilution of 1:100 (40x lens).