

PLA2G10 Rabbit Polyclonal Antibody



CAB10256

Product Information

Size:

20uL, 50uL, 100uL, 200uL

Observed MW:

18kDa

Calculated MW:

18kDa

Applications:

WB

Reactivity:

Human

Protein Background

This gene encodes a member of the phospholipase A2 family of proteins. Alternative splicing results in multiple transcript variants, at least one of which encodes a preproprotein that is proteolytically processed to generate the mature enzyme. This calcium-dependent enzyme hydrolyzes glycerophospholipids to produce free fatty acids and lysophospholipids. In one example, this enzyme catalyzes the release of arachidonic acid from cell membrane phospholipids, thus playing a role in the production of various inflammatory lipid mediators, such as prostaglandins. The encoded protein may promote the survival of breast cancer cells through its role in lipid metabolism.

Immunogen information

Gene ID:

8399

Uniprot

O15496

Synonyms:

PLA2G10; GXPLA2; GXSPLA2; SPLA2; sPLA2-X

Antibody Information

Recommended dilutions:

WB 1:500 - 1:2000

Source:

Rabbit

Isotype:

IgG

Purification:

Affinity purification

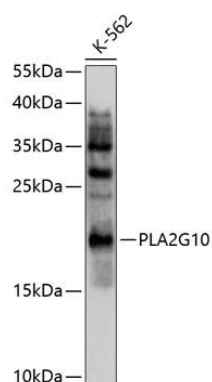
Immunogen:

A synthetic peptide corresponding to a sequence within amino acids 50-150 of human PLA2G10 (NP_003552.1).

Storage:

Store at -20°C. Avoid freeze / thaw cycles. Buffer: PBS with 0.02% sodium azide, 50% glycerol, pH7.3.

Product Images



Western blot analysis of extracts of K562 cells, using PLA2G10 antibody (CAB10256) at 1:1000 dilution. Secondary antibody: HRP Goat Anti-Rabbit IgG (H+L) (CABS014) at 1:10000 dilution. Lysates/proteins: 25ug per lane. Blocking buffer: 3% nonfat dry milk in TBST. Detection: ECL Basic Kit (CABM00020). Exposure time: 90s.