

# CDK13 Rabbit Polyclonal Antibody



CAB10258

## Product Information

### Size:

20uL, 50uL, 100uL, 200uL

### Observed MW:

164kDa

### Calculated MW:

158kDa/164kDa

### Applications:

WB

### Reactivity:

Human

## Protein Background

The protein encoded by this gene is a member of the cyclin-dependent serine/threonine protein kinase family. Members of this family are well known for their essential roles as master switches in cell cycle control. The exact function of this protein has not yet been determined, but it may play a role in mRNA processing and may be involved in regulation of hematopoiesis. Alternatively spliced transcript variants have been described.

## Immunogen information

### Gene ID:

8621

### Uniprot

Q14004

### Synonyms:

CDK13; CDC2L; CDC2L5; CHDFIDD; CHED; hCDK13

## Antibody Information

### Recommended dilutions:

WB 1:1000 - 1:2000

### Source:

Rabbit

### Isotype:

IgG

### Purification:

Affinity purification

### Immunogen:

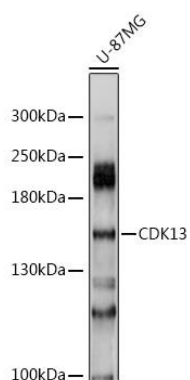
Recombinant fusion protein containing a sequence corresponding to amino acids 620-900 of human CDK13 (NP\_003709.3).

### Storage:

Store at -20°C. Avoid freeze / thaw cycles. Buffer: PBS with 0.02% sodium azide, 50% glycerol, pH7.3.

## Product Images

---



Western blot analysis of extracts of U-87MG cells, using CDK13 antibody (CAB10258) at 1:1000 dilution. Secondary antibody: HRP Goat Anti-Rabbit IgG (H+L) (CABS014) at 1:10000 dilution. Lysates/proteins: 25ug per lane. Blocking buffer: 3% nonfat dry milk in TBST. Detection: ECL Basic Kit (CABM00020). Exposure time: 1s.