

EIF3B Rabbit Polyclonal Antibody



CAB10259

Product Information

Size:

20uL, 50uL, 100uL, 200uL

Observed MW:

125kDa

Calculated MW:

92kDa/99kDa

Applications:

WB IHC IF

Reactivity:

Human, Mouse, Rat

Antibody Information

Recommended dilutions:

WB 1:1000 - 1:2000 IHC
1:50 - 1:200 IF 1:50 - 1:200

Source:

Rabbit

Isotype:

IgG

Purification:

Affinity purification

Protein Background

Immunogen information

Gene ID:

8662

Uniprot

P55884

Synonyms:

EIF3B; EIF3-ETA; EIF3-P110; EIF3-P116; EIF3S9; PRT1

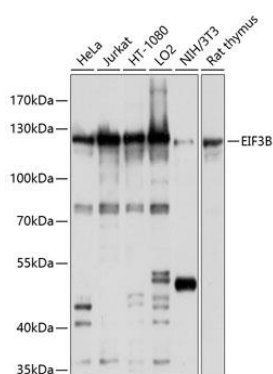
Immunogen:

Recombinant fusion protein containing a sequence corresponding to amino acids 100-350 of human EIF3B (NP_003742.2).

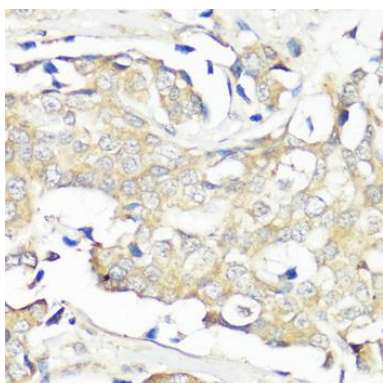
Storage:

Store at -20°C. Avoid freeze / thaw cycles. Buffer: PBS with 0.02% sodium azide, 50% glycerol, pH7.3.

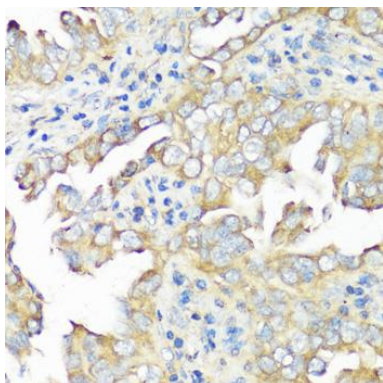
Product Images



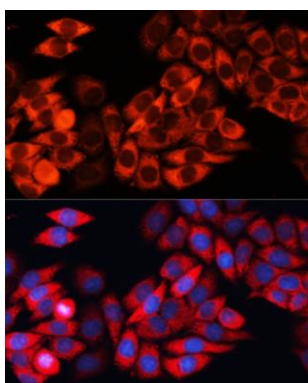
Western blot analysis of extracts of various cell lines, using EIF3B antibody (CAB10259) at 1:1000 dilution. Secondary antibody: HRP Goat Anti-Rabbit IgG (H+L) (CABS014) at 1:10000 dilution. Lysates/proteins: 25ug per lane. Blocking buffer: 3% nonfat dry milk in TBST. Detection: ECL Basic Kit (CABM00020). Exposure time: 1s.



Immunohistochemistry of paraffin-embedded human breast cancer using EIF3B antibody (CAB10259) at dilution of 1:100 (40x lens).



Immunohistochemistry of paraffin-embedded human lung cancer using EIF3B antibody (CAB10259) at dilution of 1:100 (40x lens).



Immunofluorescence analysis of HeLa cells using EIF3B Polyclonal Antibody (CAB10259) at dilution of 1:100 (40x lens). Blue: DAPI for nuclear staining.