

EIF2B5 Rabbit Polyclonal Antibody



CAB10263

Product Information

Size:

20uL, 50uL, 100uL, 200uL

Observed MW:

85kDa

Calculated MW:

80kDa

Applications:

WB IHC IF IP

Reactivity:

Human, Mouse, Rat

Protein Background

This gene encodes one of five subunits of eukaryotic translation initiation factor 2B (EIF2B), a GTP exchange factor for eukaryotic initiation factor 2 and an essential regulator for protein synthesis. Mutations in this gene and the genes encoding other EIF2B subunits have been associated with leukoencephalopathy with vanishing white matter.

Immunogen information

Gene ID:

8893

Uniprot

Q13144

Synonyms:

EIF2B5; CACH; CLE; EIF-2B; EIF2Bepsilon; LVWM

Antibody Information

Recommended dilutions:

WB 1:500 - 1:2000 IHC 1:50
- 1:200 IF 1:50 - 1:200 IP
1:50 - 1:200

Source:

Rabbit

Immunogen:

Recombinant fusion protein containing a sequence corresponding to amino acids 442-721 of human EIF2B5 (NP_003898.2).

Storage:

Store at -20°C. Avoid freeze / thaw cycles. Buffer: PBS with 0.02% sodium azide, 50% glycerol, pH7.3.

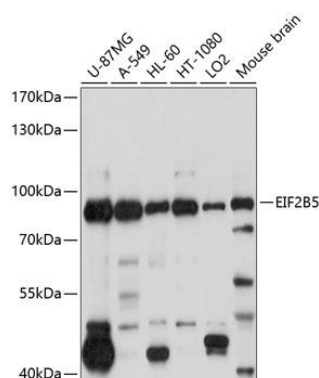
Isotype:

IgG

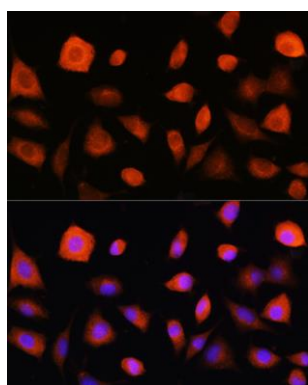
Purification:

Affinity purification

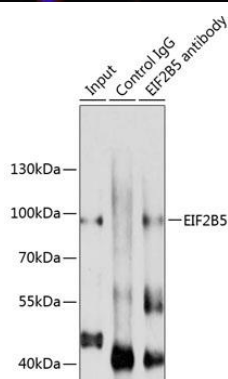
Product Images



Western blot analysis of extracts of various cell lines, using EIF2B5 antibody (CAB10263) at 1:1000 dilution. Secondary antibody: HRP Goat Anti-Rabbit IgG (H+L) (CABS014) at 1:10000 dilution. Lysates/proteins: 25ug per lane. Blocking buffer: 3% nonfat dry milk in TBST. Detection: ECL Basic Kit (CABM00020). Exposure time: 10s.



Immunofluorescence analysis of L929 cells using EIF2B5 Rabbit pAb (CAB10263) at dilution of 1:100. Blue: DAPI for nuclear staining.



Immunoprecipitation analysis of 200ug extracts of A-549 cells using 3ug EIF2B5 antibody (A10263). Western blot was performed from the immunoprecipitate using EIF2B5 antibody (A10263) at a dilution of 1:1000.