

# NRXN3 Rabbit Polyclonal Antibody



CAB10269

## Product Information

### Size:

20uL, 50uL, 100uL, 200uL

### Observed MW:

140kDa

### Calculated MW:

43kDa/47kDa/50kDa/69kDa/  
117kDa/153kDa/180kDa

### Applications:

WB

### Reactivity:

Human, Mouse, Rat

## Antibody Information

### Recommended dilutions:

WB 1:1000 - 1:2000

### Source:

Rabbit

### Isotype:

IgG

### Purification:

Affinity purification

## Protein Background

This gene encodes a member of a family of proteins that function in the nervous system as receptors and cell adhesion molecules. Extensive alternative splicing and the use of alternative promoters results in multiple transcript variants and protein isoforms for this gene, but the full-length nature of many of these variants has not been determined. Transcripts that initiate from an upstream promoter encode alpha isoforms, which contain epidermal growth factor-like (EGF-like) sequences and laminin G domains. Transcripts initiating from the downstream promoter encode beta isoforms, which lack EGF-like sequences. Genetic variation at this locus has been associated with a range of behavioral phenotypes, including alcohol dependence and autism spectrum disorder.

## Immunogen information

### Gene ID:

9369

### Uniprot

Q9HDB5/Q9Y4C0

### Synonyms:

NRXN3; C14orf60

### Immunogen:

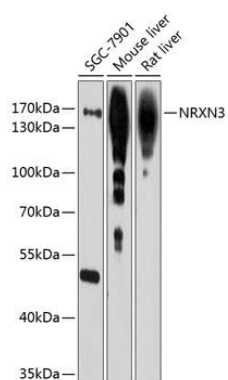
Recombinant fusion protein containing a sequence corresponding to amino acids 373-432 of human NRXN3 (NP\_620426.2).

### Storage:

Store at -20°C. Avoid freeze / thaw cycles. Buffer: PBS with 0.02% sodium azide, 50% glycerol, pH7.3.

## Product Images

---



Western blot analysis of extracts of various cell lines, using NRXN3 antibody (CAB10269) at 1:1000 dilution. Secondary antibody: HRP Goat Anti-Rabbit IgG (H+L) (CABS014) at 1:10000 dilution. Lysates/proteins: 25ug per lane. Blocking buffer: 3% nonfat dry milk in TBST. Detection: ECL Basic Kit (CABM00020). Exposure time: 90s.