

# KIF14 Rabbit Polyclonal Antibody



CAB10275

## Product Information

### Size:

20uL, 50uL, 100uL, 200uL

### Observed MW:

190kDa

### Calculated MW:

186kDa

### Applications:

WB IHC IF

### Reactivity:

Human, Mouse, Rat

## Antibody Information

### Recommended dilutions:

WB 1:1000 - 1:2000 IHC  
1:50 - 1:200 IF 1:50 - 1:200

### Source:

Rabbit

### Isotype:

IgG

### Purification:

Affinity purification

## Protein Background

This gene encodes a member of the kinesin-3 superfamily of microtubule motor proteins. These proteins are involved in numerous processes including vesicle transport, chromosome segregation, mitotic spindle formation, and cytokinesis. In human HeLa-S3 and 293T cells, this protein is localized to the cytoplasm during interphase, to the spindle poles and spindle microtubules during mitosis, and to the midbody during cytokinesis. An internal motor domain displays microtubule-dependent ATPase activity, consistent with its function as a microtubule motor protein. Knockdown of this gene results in failed cytokinesis with endoreplication, which results in multinucleated cells. This gene has been identified as a likely oncogene in breast, lung and ovarian cancers, as well as retinoblastomas and gliomas. Alternative splicing results in multiple transcript variants.

## Immunogen information

### Gene ID:

9928

### Uniprot

Q15058

### Synonyms:

KIF14; MKS12

### Immunogen:

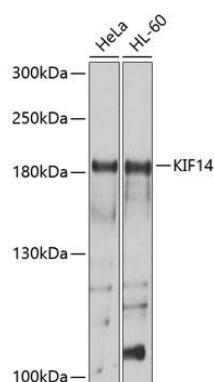
Recombinant fusion protein containing a sequence corresponding to amino acids 1399-1648 of human KIF14 (NP\_055690.1).

### Storage:

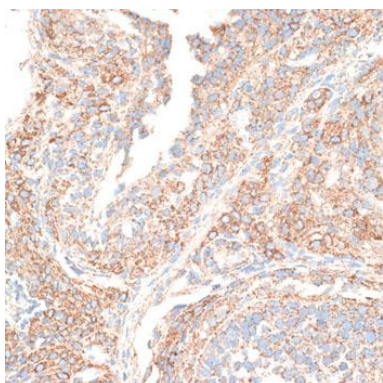
Store at -20°C. Avoid freeze / thaw cycles. Buffer: PBS with 0.02% sodium azide, 50% glycerol, pH7.3.

## Product Images

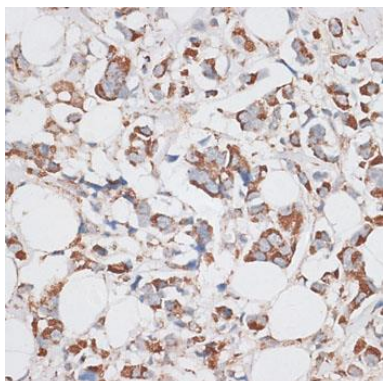
---



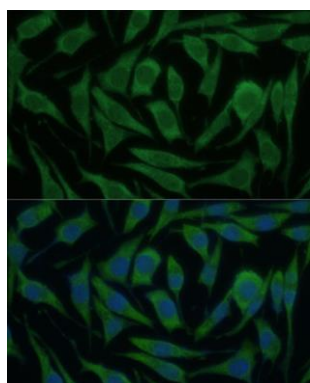
Western blot analysis of extracts of various cell lines, using KIF14 antibody (CAB10275) at 1:1000 dilution. Secondary antibody: HRP Goat Anti-Rabbit IgG (H+L) (CABS014) at 1:10000 dilution. Lysates/proteins: 25ug per lane. Blocking buffer: 3% nonfat dry milk in TBST. Detection: ECL Basic Kit (CABM00020). Exposure time: 15s.



Immunohistochemistry of paraffin-embedded rat ovary using KIF14 antibody (CAB10275) at dilution of 1:100 (40x lens).



Immunohistochemistry of paraffin-embedded human breast cancer using KIF14 antibody (CAB10275) at dilution of 1:100 (40x lens).



Immunofluorescence analysis of L929 cells using KIF14 Polyclonal Antibody (CAB10275) at dilution of 1:100 (40x lens). Blue: DAPI for nuclear staining.