

CPSF4 Rabbit Polyclonal Antibody



CAB10284

Product Information

Size:

20uL, 50uL, 100uL, 200uL

Observed MW:

30kDa

Calculated MW:

27kDa/30kDa

Applications:

WB

Reactivity:

Human

Antibody Information

Recommended dilutions:

WB 1:1000 - 1:2000

Source:

Rabbit

Isotype:

IgG

Purification:

Affinity purification

Protein Background

Inhibition of the nuclear export of poly(A)-containing mRNAs caused by the influenza A virus NS1 protein requires its effector domain. The NS1 effector domain functionally interacts with the cellular 30 kDa subunit of cleavage and polyadenylation specific factor 4, an essential component of the 3' end processing machinery of cellular pre-mRNAs. In influenza virus-infected cells, the NS1 protein is physically associated with cleavage and polyadenylation specific factor 4, 30kD subunit. Binding of the NS1 protein to the 30 kDa protein in vitro prevents CPSF binding to the RNA substrate and inhibits 3' end cleavage and polyadenylation of host pre-mRNAs. Thus the NS1 protein selectively inhibits the nuclear export of cellular, and not viral, mRNAs. Multiple alternatively spliced transcript variants that encode different isoforms have been described for this gene.

Immunogen information

Gene ID:

10898

Uniprot

O95639

Synonyms:

CPSF4; CPSF30; NAR; NEB-1; NEB1

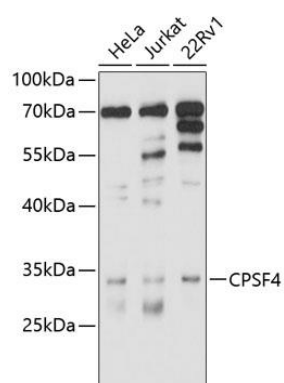
Immunogen:

Recombinant fusion protein containing a sequence corresponding to amino acids 1-244 of human CPSF4 (NP_001075028.1).

Storage:

Store at -20°C. Avoid freeze / thaw cycles. Buffer: PBS with 0.02% sodium azide, 50% glycerol, pH7.3.

Product Images



Western blot analysis of extracts of various cell lines, using CPSF4 antibody (CAB10284) at 1:1000 dilution. Secondary antibody: HRP Goat Anti-Rabbit IgG (H+L) (CABS014) at 1:10000 dilution. Lysates/proteins: 25ug per lane. Blocking buffer: 3% nonfat dry milk in TBST. Detection: ECL Basic Kit (CABM00020). Exposure time: 15s.