

# DUSP14 Rabbit Polyclonal Antibody



CAB10287

## Product Information

### Size:

20uL, 50uL, 100uL, 200uL

### Observed MW:

22kDa

### Calculated MW:

22kDa

### Applications:

WB IF

### Reactivity:

Human, Mouse, Rat

## Antibody Information

### Recommended dilutions:

WB 1:200 - 1:2000 IF 1:50 - 1:200

### Source:

Rabbit

### Isotype:

IgG

### Purification:

Affinity purification

## Protein Background

### Immunogen information

#### Gene ID:

11072

#### Uniprot

O95147

#### Synonyms:

DUSP14; MKP-L; MKP6

#### Immunogen:

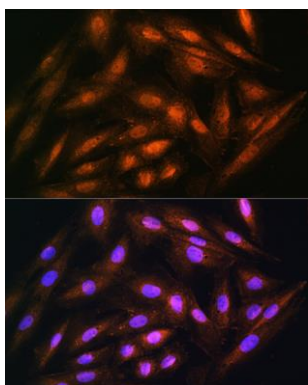
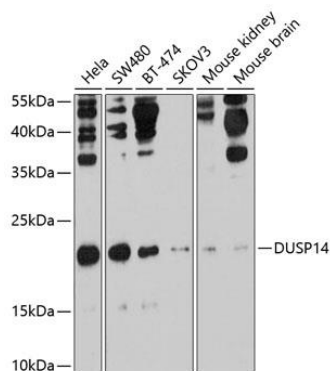
Recombinant fusion protein containing a sequence corresponding to amino acids 1-198 of human DUSP14 (NP\_008957.1).

#### Storage:

Store at -20°C. Avoid freeze / thaw cycles. Buffer: PBS with 0.02% sodium azide, 50% glycerol, pH7.3.

## Product Images

---



Western blot analysis of extracts of various cell lines, using DUSP14 antibody (CAB10287) at 1:1000 dilution. Secondary antibody: HRP Goat Anti-Rabbit IgG (H+L) (CABS014) at 1:10000 dilution. Lysates/proteins: 25ug per lane. Blocking buffer: 3% nonfat dry milk in TBST. Detection: ECL Enhanced Kit (CABM00021). Exposure time: 30s.

Immunofluorescence analysis of H9C2 cells using DUSP14 Rabbit pAb (CAB10287) at dilution of 1:100. Blue: DAPI for nuclear staining.