

# BTN3A1 Rabbit Polyclonal Antibody



CAB10288

## Product Information

### Size:

20uL, 50uL, 100uL, 200uL

### Observed MW:

56kDa

### Calculated MW:

39kDa/41kDa/52kDa/57kDa

### Applications:

WB IHC IF

### Reactivity:

Human, Mouse, Rat

## Antibody Information

### Recommended dilutions:

WB 1:500 - 1:2000 IHC 1:50  
- 1:100 IF 1:50 - 1:100

### Source:

Rabbit

### Isotype:

IgG

### Purification:

Affinity purification

## Protein Background

### Immunogen information

#### Gene ID:

11119

#### Uniprot

O00481

#### Synonyms:

BTN3A1; BT3.1; BTF5; BTN3.1; CD277

#### Immunogen:

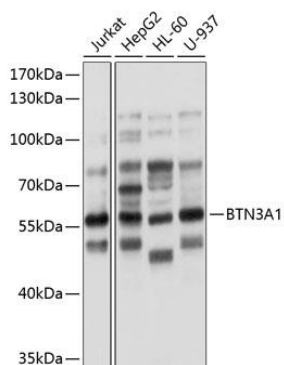
Recombinant fusion protein containing a sequence corresponding to amino acids 40-250 of human BTN3A1 (NP\_008979.3).

#### Storage:

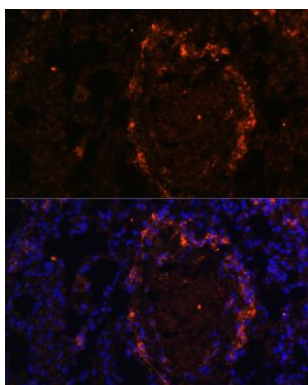
Store at -20°C. Avoid freeze / thaw cycles. Buffer: PBS with 0.02% sodium azide, 50% glycerol, pH7.3.

## Product Images

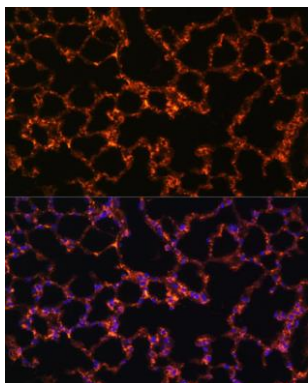
---



Western blot analysis of extracts of various cell lines, using BTN3A1 antibody (CAB10288) at 1:1000 dilution. Secondary antibody: HRP Goat Anti-Rabbit IgG (H+L) (CABS014) at 1:10000 dilution. Lysates/proteins: 25ug per lane. Blocking buffer: 3% nonfat dry milk in TBST. Detection: ECL Basic Kit (CABM00020). Exposure time: 5s.



Immunofluorescence analysis of rat lung using BTN3A1 Polyclonal Antibody (CAB10288) at dilution of 1:100 (40x lens). Blue: DAPI for nuclear staining.



Immunofluorescence analysis of mouse lung using BTN3A1 Polyclonal Antibody (CAB10288) at dilution of 1:100 (40x lens). Blue: DAPI for nuclear staining.