

BICD2 Rabbit Polyclonal Antibody



CAB10292

Product Information

Size:

20uL, 50uL, 100uL, 200uL

Observed MW:

118kDa

Calculated MW:

93kDa/96kDa

Applications:

WB

Reactivity:

Human, Mouse, Rat

Protein Background

This gene is one of two human homologs of *Drosophila* bicaudal-D and a member of the Bicoid family. It has been implicated in dynein-mediated, minus end-directed motility along microtubules. It has also been reported to be a phosphorylation target of NIMA related kinase 8. Two alternative splice variants have been described.

Immunogen information

Gene ID:

23299

Uniprot

Q8TD16

Synonyms:

BICD2; SMALED2; bA526D8.1

Antibody Information

Recommended dilutions:

WB 1:1000 - 1:2000

Source:

Rabbit

Isotype:

IgG

Purification:

Affinity purification

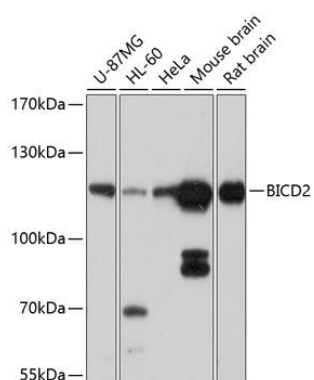
Immunogen:

Recombinant fusion protein containing a sequence corresponding to amino acids 440-620 of human BICD2 (NP_001003800.1).

Storage:

Store at -20°C. Avoid freeze / thaw cycles. Buffer: PBS with 0.02% sodium azide, 50% glycerol, pH7.3.

Product Images



Western blot analysis of extracts of various cell lines, using BICD2 antibody (CAB10292) at 1:1000 dilution. Secondary antibody: HRP Goat Anti-Rabbit IgG (H+L) (CABS014) at 1:10000 dilution. Lysates/proteins: 25ug per lane. Blocking buffer: 3% nonfat dry milk in TBST. Detection: ECL Basic Kit (CABM00020). Exposure time: 30s.