

DDAH1 Rabbit Polyclonal Antibody



CAB10295

Product Information

Size:

20uL, 50uL, 100uL, 200uL

Observed MW:

37kDa

Calculated MW:

20kDa/31kDa

Applications:

WB IF IP

Reactivity:

Human, Mouse, Rat

Protein Background

This gene belongs to the dimethylarginine dimethylaminohydrolase (DDAH) gene family. The encoded enzyme plays a role in nitric oxide generation by regulating cellular concentrations of methylarginines, which in turn inhibit nitric oxide synthase activity.

Immunogen information

Gene ID:

23576

Uniprot

O94760

Synonyms:

DDAH1; DDAH; DDAH-1; DDAHI; HEL-S-16

Antibody Information

Recommended dilutions:

WB 1:500 - 1:2000 IF 1:50 -
1:200 IP 1:50 - 1:200

Source:

Rabbit

Isotype:

IgG

Purification:

Affinity purification

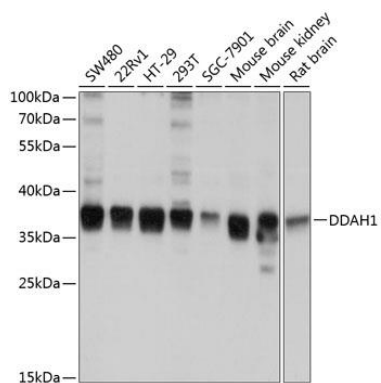
Immunogen:

Recombinant fusion protein containing a sequence corresponding to amino acids 1-285 of human DDAH1 (NP_036269.1).

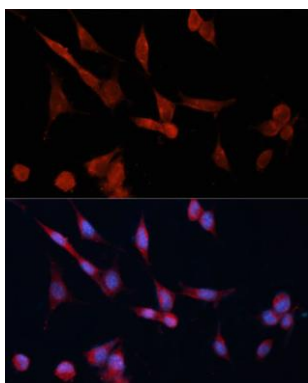
Storage:

Store at -20°C. Avoid freeze / thaw cycles. Buffer: PBS with 0.02% sodium azide, 50% glycerol, pH7.3.

Product Images



Western blot analysis of extracts of various cell lines, using DDAH1 antibody (CAB10295) at 1:1000 dilution. Secondary antibody: HRP Goat Anti-Rabbit IgG (H+L) (CABS014) at 1:10000 dilution. Lysates/proteins: 25ug per lane. Blocking buffer: 3% nonfat dry milk in TBST. Detection: ECL Basic Kit (CABM00020). Exposure time: 1s.



Immunofluorescence analysis of NIH-3T3 cells using DDAH1 Polyclonal Antibody (CAB10295) at dilution of 1:100 (40x lens). Blue: DAPI for nuclear staining.