

# TRHDE Rabbit Polyclonal Antibody



CAB10300

---

## Product Information

### Size:

20uL, 50uL, 100uL, 200uL

### Observed MW:

117kDa

### Calculated MW:

117kDa

### Applications:

WB

### Reactivity:

Human

## Protein Background

This gene encodes a member of the peptidase M1 family. The encoded protein is an extracellular peptidase that specifically cleaves and inactivates the neuropeptide thyrotropin-releasing hormone.

## Immunogen information

### Gene ID:

29953

### Uniprot

Q9UKU6

### Synonyms:

TRHDE; PAP-II; PGPEP2; TRH-DE

## Antibody Information

### Recommended dilutions:

WB 1:200 - 1:2000

### Source:

Rabbit

### Isotype:

IgG

### Purification:

Affinity purification

### Immunogen:

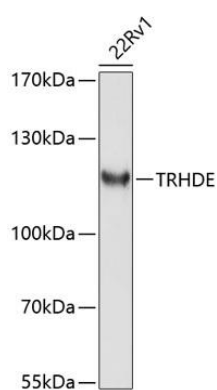
Recombinant fusion protein containing a sequence corresponding to amino acids 62-200 of human TRHDE (NP\_037513.1).

### Storage:

Store at -20°C. Avoid freeze / thaw cycles. Buffer: PBS with 0.02% sodium azide, 50% glycerol, pH7.3.

## Product Images

---



Western blot analysis of extracts of 22Rv1 cells, using TRHDE antibody (CAB10300) at 1:1000 dilution. Secondary antibody: HRP Goat Anti-Rabbit IgG (H+L) (CABS014) at 1:10000 dilution. Lysates/proteins: 25ug per lane. Blocking buffer: 3% nonfat dry milk in TBST. Detection: ECL Enhanced Kit (CABM00021). Exposure time: 90s.