

KIF16B Rabbit Polyclonal Antibody



CAB10314

Product Information

Size:

20uL, 50uL, 100uL, 200uL

Observed MW:

160kDa

Calculated MW:

132kDa/147kDa/148kDa/152kDa/159kDa

Applications:

WB

Reactivity:

Human

Antibody Information

Recommended dilutions:

WB 1:200 - 1:2000

Source:

Rabbit

Isotype:

IgG

Purification:

Affinity purification

Protein Background

The protein encoded by this gene is a kinesin-like protein that may be involved in intracellular trafficking. Three transcript variants encoding different isoforms have been found for this gene.

Immunogen information

Gene ID:

55614

Uniprot

Q96L93

Synonyms:

KIF16B; C20orf23; KISC20ORF; SNX23

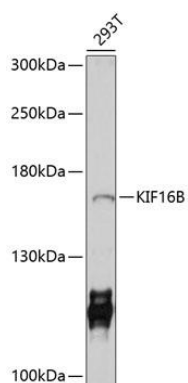
Immunogen:

Recombinant fusion protein containing a sequence corresponding to amino acids 1-210 of human KIF16B (NP_078980.3).

Storage:

Store at -20°C. Avoid freeze / thaw cycles. Buffer: PBS with 0.02% sodium azide, 50% glycerol, pH7.3.

Product Images



Western blot analysis of extracts of 293T cells, using KIF16B antibody (CAB10314) at 1:1000 dilution. Secondary antibody: HRP Goat Anti-Rabbit IgG (H+L) (CABS014) at 1:10000 dilution. Lysates/proteins: 25ug per lane. Blocking buffer: 3% nonfat dry milk in TBST. Detection: ECL Enhanced Kit (CABM00021). Exposure time: 30s.