

# CISD1 Rabbit Polyclonal Antibody



CAB10317

## Product Information

### Size:

20uL, 50uL, 100uL, 200uL

### Observed MW:

12kDa

### Calculated MW:

12kDa

### Applications:

WB IHC

### Reactivity:

Human, Mouse, Rat

## Protein Background

This gene encodes a protein with a CDGSH iron-sulfur domain and has been shown to bind a redox-active [2Fe-2S] cluster. The encoded protein has been localized to the outer membrane of mitochondria and is thought to play a role in regulation of oxidation. Genes encoding similar proteins are located on chromosomes 4 and 17, and a pseudogene of this gene is located on chromosome 2.

## Immunogen information

### Gene ID:

55847

### Uniprot

Q9NZ45

### Synonyms:

CISD1; C10orf70; MDS029; ZCD1; mitoNEET

## Antibody Information

### Recommended dilutions:

WB 1:1000 - 1:2000 IHC

1:50 - 1:200

### Source:

Rabbit

### Isotype:

IgG

### Purification:

Affinity purification

### Immunogen:

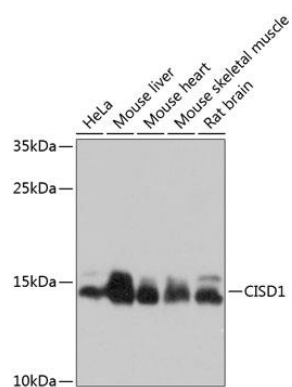
Recombinant fusion protein containing a sequence corresponding to amino acids 29-108 of human CISD1 (NP\_060934.1).

### Storage:

Store at -20°C. Avoid freeze / thaw cycles. Buffer: PBS with 0.02% sodium azide, 50% glycerol, pH7.3.

## Product Images

---



Western blot analysis of extracts of various cell lines, using Cisd1 antibody (CAB10317) at 1:1000 dilution. Secondary antibody: HRP Goat Anti-Rabbit IgG (H+L) (CABS014) at 1:10000 dilution. Lysates/proteins: 25ug per lane. Blocking buffer: 3% nonfat dry milk in TBST. Detection: ECL Basic Kit (CABM00020). Exposure time: 10s.