

LEPRE1 Rabbit Polyclonal Antibody



CAB10322

Product Information

Size:

20uL, 50uL, 100uL, 200uL

Observed MW:

100kDa

Calculated MW:

41kDa/78kDa/83kDa/90kDa

Applications:

WB

Reactivity:

Human, Mouse

Protein Background

This gene encodes an enzyme that is a member of the collagen prolyl hydroxylase family. These enzymes are localized to the endoplasmic reticulum and their activity is required for proper collagen synthesis and assembly. Mutations in this gene are associated with osteogenesis imperfecta type VIII. Three alternatively spliced transcript variants encoding different isoforms have been described. Other variants may exist, but their biological validity has not been determined.

Immunogen information

Gene ID:

64175

Uniprot

Q32P28

Synonyms:

P3H1; GROS1; LEPRE1; OI8

Antibody Information

Recommended dilutions:

WB 1:1000 - 1:2000

Source:

Rabbit

Isotype:

IgG

Purification:

Affinity purification

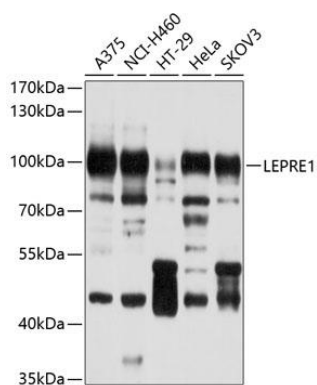
Immunogen:

Recombinant fusion protein containing a sequence corresponding to amino acids 497-736 of human LEPRE1 (NP_071751.3).

Storage:

Store at -20°C. Avoid freeze / thaw cycles. Buffer: PBS with 0.02% sodium azide, 50% glycerol, pH7.3.

Product Images



Western blot analysis of extracts of various cell lines, using LEPRE1 antibody (CAB10322) at 1:1000 dilution. Secondary antibody: HRP Goat Anti-Rabbit IgG (H+L) (CABS014) at 1:10000 dilution. Lysates/proteins: 25ug per lane. Blocking buffer: 3% nonfat dry milk in TBST. Detection: ECL Basic Kit (CABM00020). Exposure time: 30s.