

SPG11 Rabbit Polyclonal Antibody



CAB10326

Product Information

Size:

20uL, 50uL, 100uL, 200uL

Observed MW:

280kDa

Calculated MW:

236kDa/266kDa/278kDa

Applications:

WB

Reactivity:

Human

Protein Background

The protein encoded by this gene is a potential transmembrane protein that is phosphorylated upon DNA damage. Defects in this gene are a cause of spastic paraplegia type 11 (SPG11). Multiple transcript variants encoding different isoforms have been found for this gene.

Immunogen information

Gene ID:

80208

Uniprot

Q96J17

Synonyms:

SPG11; ALS5; CMT2X; KIAA1840; spatacsin

Antibody Information

Recommended dilutions:

WB 1:200 - 1:2000

Source:

Rabbit

Isotype:

IgG

Purification:

Affinity purification

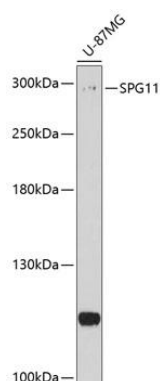
Immunogen:

Recombinant fusion protein containing a sequence corresponding to amino acids 550-750 of human SPG11 (NP_079413.3).

Storage:

Store at -20°C. Avoid freeze / thaw cycles. Buffer: PBS with 0.02% sodium azide, 50% glycerol, pH7.3.

Product Images



Western blot analysis of extracts of U-87MG cells, using SPG11 antibody (CAB10326) at 1:1000 dilution. Secondary antibody: HRP Goat Anti-Rabbit IgG (H+L) (CABS014) at 1:10000 dilution. Lysates/proteins: 25ug per lane. Blocking buffer: 3% nonfat dry milk in TBST. Detection: ECL Enhanced Kit (CABM00021). Exposure time: 90s.