

FBXO38 Rabbit Polyclonal Antibody



CAB10328

Product Information

Size:

20uL, 50uL, 100uL, 200uL

Observed MW:

210kDa

Calculated MW:

210KDa

Applications:

WB IHC

Reactivity:

Human, Rat

Protein Background

This gene encodes a large protein that contains an F-box domain and may participate in protein ubiquitination. The encoded protein is a transcriptional co-activator of Krueppel-like factor 7 (Klf7). A heterozygous mutation in this gene was found in individuals with autosomal dominant distal hereditary motor neuronopathy type IID. There is a pseudogene for this gene on chromosome 4. Alternative splicing results in multiple transcript variants.

Immunogen information

Gene ID:

81545

Uniprot

Q6PIJ6

Synonyms:

FBXO38; Fbx38; HMN2D; MOKA; SP329

Antibody Information

Recommended dilutions:

WB 1:500 - 1:2000 IHC 1:50
- 1:200

Source:

Rabbit

Isotype:

IgG

Purification:

Affinity purification

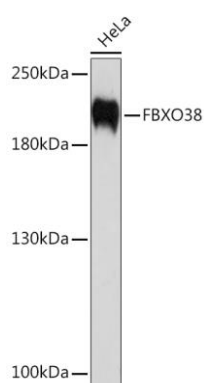
Immunogen:

Recombinant protein of human FBXO38

Storage:

Store at -20°C. Avoid freeze / thaw cycles. Buffer: PBS with 0.02% sodium azide, 50% glycerol, pH7.3.

Product Images



Western blot analysis of extracts of HeLa cells, using FBXO38 Rabbit pAb (CAB10328) at 1:1000 dilution. Secondary antibody: HRP Goat Anti-Rabbit IgG (H+L) (CABS014) at 1:10000 dilution. Lysates/proteins: 25ug per lane. Blocking buffer: 3% nonfat dry milk in TBST. Detection: ECL Enhanced Kit (CABM00021). Exposure time: 90s.