

TIPIN Rabbit Polyclonal Antibody



CAB10344

Product Information

Size:

20uL, 50uL, 100uL, 200uL

Observed MW:

50kDa

Calculated MW:

34kDa

Applications:

WB

Reactivity:

Human, Mouse

Protein Background

The protein encoded by this gene is part of the replisome complex, a group of proteins that support DNA replication. It binds TIM, which is involved in circadian rhythm regulation, and aids in protecting cells against DNA damage and stress. Two pseudogenes and two transcript variants encoding different isoforms have been found for this gene.

Immunogen information

Gene ID:

54962

Uniprot

Q9BVV5

Synonyms:

TIPIN

Antibody Information

Recommended dilutions:

WB 1:500 - 1:2000

Source:

Rabbit

Isotype:

IgG

Purification:

Affinity purification

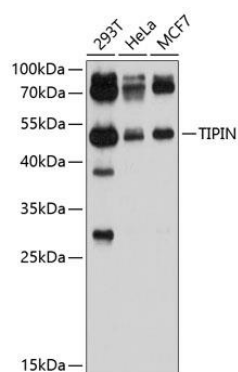
Immunogen:

Recombinant fusion protein containing a sequence corresponding to amino acids 1-301 of human TIPIN (NP_060328.2).

Storage:

Store at -20°C. Avoid freeze / thaw cycles. Buffer: PBS with 0.02% sodium azide, 50% glycerol, pH7.3.

Product Images



Western blot analysis of extracts of various cell lines, using TIPIN antibody (CAB10344) at 1:1000 dilution. Secondary antibody: HRP Goat Anti-Rabbit IgG (H+L) (CABS014) at 1:10000 dilution. Lysates/proteins: 25ug per lane. Blocking buffer: 3% nonfat dry milk in TBST. Detection: ECL Basic Kit (CABM00020). Exposure time: 10s.