

# DIAPH3 Rabbit Polyclonal Antibody



CAB10351

---

## Product Information

### Size:

20uL, 50uL, 100uL, 200uL

### Observed MW:

137kDa

### Calculated MW:

79kDa/98kDa/127-136kDa

### Applications:

WB

### Reactivity:

Human

## Protein Background

This gene encodes a member of the diaphanous subfamily of the formin family. Members of this family are involved in actin remodeling and regulate cell movement and adhesion. Mutations in this gene are associated with autosomal dominant auditory neuropathy 1. Multiple transcript variants encoding different isoforms have been found for this gene.

## Immunogen information

### Gene ID:

81624

### Uniprot

Q9NSV4

### Synonyms:

DIAPH3; AN; AUNA1; DIA2; DRF3; NSDAN; diap3; mDia2

## Antibody Information

### Recommended dilutions:

WB 1:500 - 1:2000

### Source:

Rabbit

### Isotype:

IgG

### Purification:

Affinity purification

### Immunogen:

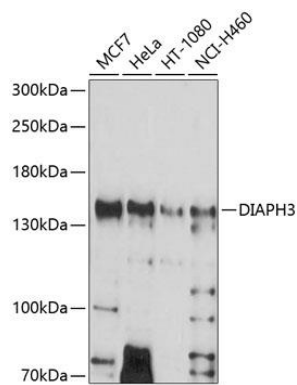
Recombinant fusion protein containing a sequence corresponding to amino acids 630-849 of human DIAPH3 (NP\_112194.2).

### Storage:

Store at -20°C. Avoid freeze / thaw cycles. Buffer: PBS with 0.02% sodium azide, 50% glycerol, pH7.3.

## Product Images

---



Western blot analysis of extracts of various cell lines, using DIAPH3 antibody (CAB10351) at 1:1000 dilution. Secondary antibody: HRP Goat Anti-Rabbit IgG (H+L) (CABS014) at 1:10000 dilution. Lysates/proteins: 25ug per lane. Blocking buffer: 3% nonfat dry milk in TBST. Detection: ECL Basic Kit (CABM00020). Exposure time: 90s.