

# KLHL42 Rabbit Polyclonal Antibody



CAB10373

---

## Product Information

### Size:

20uL, 50uL, 100uL, 200uL

### Observed MW:

### Calculated MW:

56kDa

### Applications:

IHC

### Reactivity:

Human, Mouse

## Antibody Information

### Recommended dilutions:

IHC 1:50 - 1:200

### Source:

Rabbit

### Isotype:

IgG

### Purification:

Affinity purification

## Protein Background

### Immunogen information

#### Gene ID:

57542

#### Uniprot

Q9P2K6

#### Synonyms:

KLHL42; Ctb9; KLHDC5

#### Immunogen:

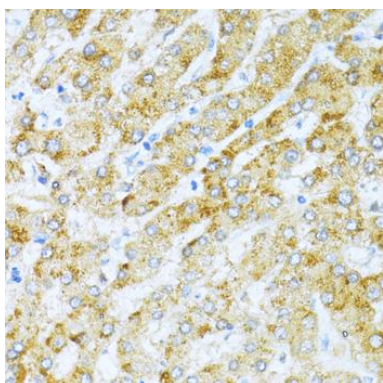
Recombinant fusion protein containing a sequence corresponding to amino acids 206-505 of human KLHL42 (NP\_065833.1).

#### Storage:

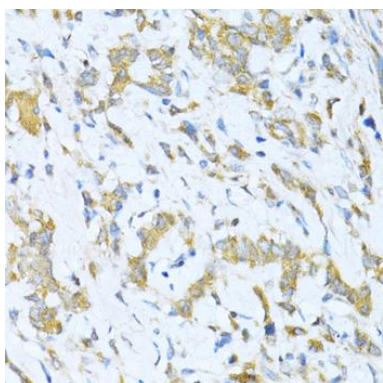
Store at -20°C. Avoid freeze / thaw cycles. Buffer: PBS with 0.02% sodium azide, 50% glycerol, pH7.3.

## Product Images

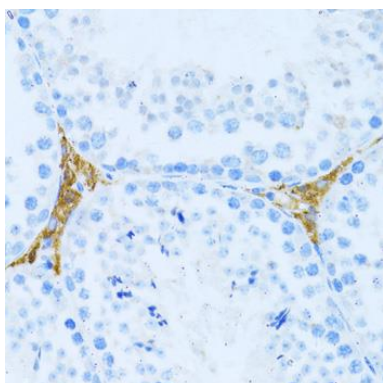
---



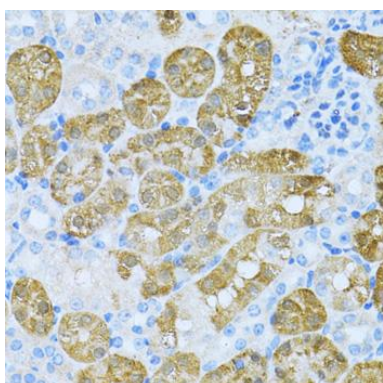
Immunohistochemistry of paraffin-embedded human liver using KLHL42 antibody (CAB10373) at dilution of 1:100 (40x lens).



Immunohistochemistry of paraffin-embedded human gastric cancer using KLHL42 antibody (CAB10373) at dilution of 1:100 (40x lens).



Immunohistochemistry of paraffin-embedded mouse testis leydig using KLHL42 antibody (CAB10373) at dilution of 1:100 (40x lens).



Immunohistochemistry of paraffin-embedded mouse kidney using KLHL42 antibody (CAB10373) at dilution of 1:100 (40x lens).