

# CHMP2A Rabbit Polyclonal Antibody



CAB10380

---

## Product Information

### Size:

20uL, 50uL, 100uL, 200uL

### Observed MW:

37kDa

### Calculated MW:

25kDa

### Applications:

WB

### Reactivity:

Human

## Antibody Information

### Recommended dilutions:

WB 1:500 - 1:2000

### Source:

Rabbit

### Isotype:

IgG

### Purification:

Affinity purification

## Protein Background

### Immunogen information

#### Gene ID:

27243

#### Uniprot

O43633

#### Synonyms:

CHMP2A; BC-2; BC2; CHMP2; VPS2; VPS2A

#### Immunogen:

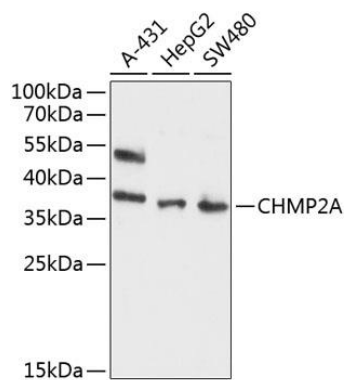
Recombinant fusion protein containing a sequence corresponding to amino acids 1-222 of human CHMP2A (NP\_055268.1).

#### Storage:

Store at -20°C. Avoid freeze / thaw cycles. Buffer: PBS with 0.02% sodium azide, 50% glycerol, pH7.3.

## Product Images

---



Western blot analysis of extracts of various cell lines, using CHMP2A antibody (CAB10380) at 1:1000 dilution. Secondary antibody: HRP Goat Anti-Rabbit IgG (H+L) (CABS014) at 1:10000 dilution. Lysates/proteins: 25ug per lane. Blocking buffer: 3% nonfat dry milk in TBST. Detection: ECL Enhanced Kit (CABM00021). Exposure time: 90s.