

UBE2G2 Rabbit Polyclonal Antibody



CAB10408

Product Information

Size:

20uL, 50uL, 100uL, 200uL

Observed MW:

19kDa

Calculated MW:

15kDa/18kDa

Applications:

WB IF

Reactivity:

Human, Mouse, Rat

Antibody Information

Recommended dilutions:

WB 1:500 - 1:2000 IF 1:50 - 1:200

Source:

Rabbit

Isotype:

IgG

Purification:

Affinity purification

Protein Background

The modification of proteins with ubiquitin is an important cellular mechanism for targeting abnormal or short-lived proteins for degradation. Ubiquitination involves at least three classes of enzymes: ubiquitin-activating enzymes, or E1s, ubiquitin-conjugating enzymes, or E2s, and ubiquitin-protein ligases, or E3s. This gene encodes a member of the E2 ubiquitin-conjugating enzyme family. The encoded protein shares 100% sequence identity with the mouse counterpart. This gene is ubiquitously expressed, with high expression seen in adult muscle. Three alternatively spliced transcript variants encoding distinct isoforms have been found for this gene.

Immunogen information

Gene ID:

7327

Uniprot

P60604

Synonyms:

UBE2G2; UBC7

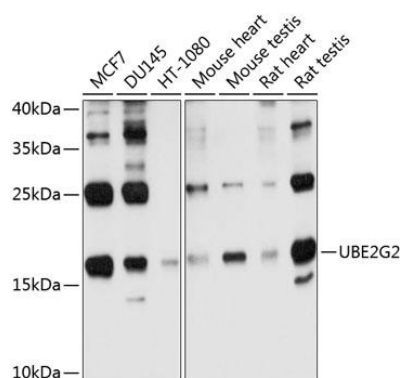
Immunogen:

Recombinant fusion protein containing a sequence corresponding to amino acids 1-165 of human UBE2G2 (NP_003334.2).

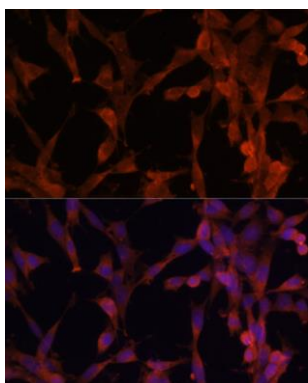
Storage:

Store at -20°C. Avoid freeze / thaw cycles. Buffer: PBS with 0.02% sodium azide, 50% glycerol, pH7.3.

Product Images



Western blot analysis of extracts of various cell lines, using UBE2G2 antibody (CAB10408) at 1:1000 dilution. Secondary antibody: HRP Goat Anti-Rabbit IgG (H+L) (CABS014) at 1:10000 dilution. Lysates/proteins: 25ug per lane. Blocking buffer: 3% nonfat dry milk in TBST. Detection: ECL Basic Kit (CABM00020). Exposure time: 30s.



Immunofluorescence analysis of NIH-3T3 cells using UBE2G2 antibody (CAB10408) at dilution of 1:100. Blue: DAPI for nuclear staining.