

# AP3M1 Rabbit Polyclonal Antibody



CAB10410

---

## Product Information

### Size:

20uL, 50uL, 100uL, 200uL

### Observed MW:

47kDa

### Calculated MW:

46kDa

### Applications:

WB

### Reactivity:

Human, Mouse, Rat

## Antibody Information

### Recommended dilutions:

WB 1:500 - 1:2000

### Source:

Rabbit

### Isotype:

IgG

### Purification:

Affinity purification

## Protein Background

The protein encoded by this gene is the medium subunit of AP-3, which is an adaptor-related protein complex associated with the Golgi region as well as more peripheral intracellular structures. AP-3 facilitates the budding of vesicles from the Golgi membrane, and it may directly function in protein sorting to the endosomal/lysosomal system. AP-3 is a heterotetrameric protein complex composed of two large subunits (delta and beta3), a medium subunit (mu3), and a small subunit (sigma 3). Mutations in one of the large subunits of AP-3 have been associated with the Hermansky-Pudlak syndrome, a genetic disorder characterized by defective lysosome-related organelles. Alternative splicing of this gene results in multiple transcript variants.

## Immunogen information

### Gene ID:

26985

### Uniprot

Q9Y2T2

### Synonyms:

AP3M1

### Immunogen:

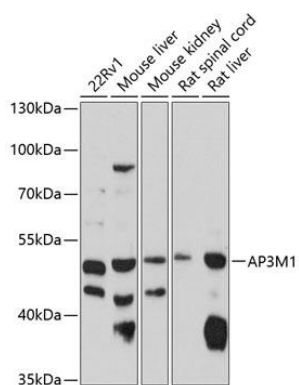
Recombinant fusion protein containing a sequence corresponding to amino acids 219-418 of human AP3M1 (NP\_036227.1).

### Storage:

Store at -20°C. Avoid freeze / thaw cycles. Buffer: PBS with 0.02% sodium azide, 50% glycerol, pH7.3.

## Product Images

---



Western blot analysis of extracts of various cell lines, using AP3M1 antibody (CAB10410) at 1:1000 dilution. Secondary antibody: HRP Goat Anti-Rabbit IgG (H+L) (CABS014) at 1:10000 dilution. Lysates/proteins: 25ug per lane. Blocking buffer: 3% nonfat dry milk in TBST. Detection: ECL Enhanced Kit (CABM00021). Exposure time: 90s.