

CD300C Rabbit Polyclonal Antibody



CAB10420

Product Information

Size:

20uL, 50uL, 100uL, 200uL

Observed MW:

52kDa

Calculated MW:

24kDa

Applications:

WB

Reactivity:

Human, Mouse, Rat

Antibody Information

Recommended dilutions:

WB 1:500 - 1:2000

Source:

Rabbit

Isotype:

IgG

Purification:

Affinity purification

Protein Background

Immunogen information

Gene ID:

10871

Uniprot

Q08708

Synonyms:

CD300C; CLM-6; CMRF-35; CMRF-35A; CMRF35; CMRF35-A1; CMRF35A; CMRF35A1; IGSF16; LIR

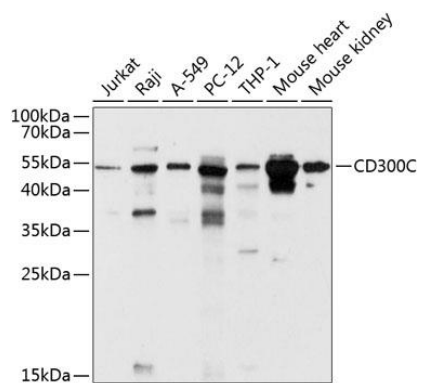
Immunogen:

Recombinant fusion protein containing a sequence corresponding to amino acids 21-183 of human CD300C (NP_006669.1).

Storage:

Store at -20°C. Avoid freeze / thaw cycles. Buffer: PBS with 0.02% sodium azide, 50% glycerol, pH7.3.

Product Images



Western blot analysis of extracts of various cell lines, using CD300C antibody (CAB10420) at 1:1000 dilution. Secondary antibody: HRP Goat Anti-Rabbit IgG (H+L) (CABS014) at 1:10000 dilution. Lysates/proteins: 25ug per lane. Blocking buffer: 3% nonfat dry milk in TBST. Detection: ECL Enhanced Kit (CABM00021). Exposure time: 30s.