

SEMA4F Rabbit Polyclonal Antibody



CAB10432

Product Information

Size:

20uL, 50uL, 100uL, 200uL

Observed MW:

83kDa

Calculated MW:

66kDa/83kDa

Applications:

WB IHC

Reactivity:

Human, Mouse, Rat

Protein Background

This gene encodes a transmembrane class IV semaphorin family protein, which plays a role in neural development. This gene may be involved in neurogenesis in prostate cancer, the development of neurofibromas, and breast cancer tumorigenesis. Alternative splicing results in multiple transcript variants.

Immunogen information

Gene ID:

10505

Uniprot

O95754

Synonyms:

SEMA4F; M-SEMA; PRO2353; S4F; SEMAM; SEMAW; m-Sema-M

Antibody Information

Recommended dilutions:

WB 1:500 - 1:2000 IHC 1:50
- 1:200

Source:

Rabbit

Isotype:

IgG

Purification:

Affinity purification

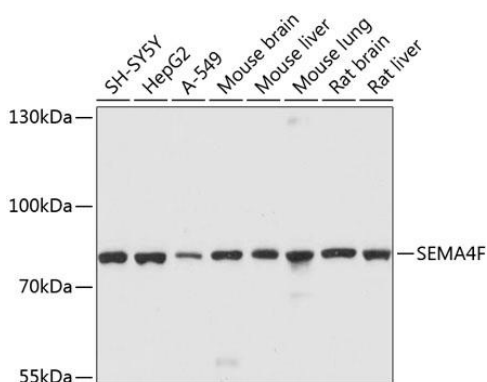
Immunogen:

Recombinant fusion protein containing a sequence corresponding to amino acids 280-420 of human SEMA4F (NP_004254.2).

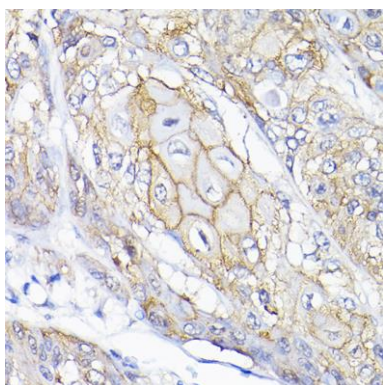
Storage:

Store at -20°C. Avoid freeze / thaw cycles. Buffer: PBS with 0.02% sodium azide, 50% glycerol, pH7.3.

Product Images



Western blot analysis of extracts of various cell lines, using SEMA4F antibody (CAB10432) at 1:1000 dilution. Secondary antibody: HRP Goat Anti-Rabbit IgG (H+L) (CABS014) at 1:10000 dilution. Lysates/proteins: 25ug per lane. Blocking buffer: 3% nonfat dry milk in TBST. Detection: ECL Basic Kit (CABM00020). Exposure time: 30s.



Immunohistochemistry of paraffin-embedded human esophageal cancer using SEMA4F Rabbit pAb (CAB10432) at dilution of 1:200 (40x lens).