

SLC44A4 Rabbit Polyclonal Antibody



CAB10435

Product Information

Size:

20uL, 50uL, 100uL, 200uL

Observed MW:

79kDa

Calculated MW:

32kDa/70kDa/74kDa/79kDa

Applications:

WB

Reactivity:

Human, Mouse

Protein Background

The protein encoded by this gene may be a sodium-dependent transmembrane transport protein involved in the uptake of choline by cholinergic neurons. Defects in this gene can cause sialidosis, a lysosomal storage disease. Three transcript variants encoding different isoforms have been found for this gene.

Immunogen information

Gene ID:

80736

Uniprot

Q53GD3

Synonyms:

SLC44A4; C6orf29; CTL4; NG22; TPPT

Antibody Information

Recommended dilutions:

WB 1:500 - 1:2000

Source:

Rabbit

Isotype:

IgG

Purification:

Affinity purification

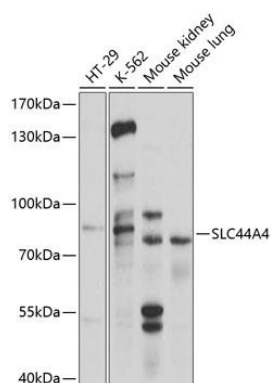
Immunogen:

Recombinant fusion protein containing a sequence corresponding to amino acids 65-215 of human SLC44A4 (NP_079533.2).

Storage:

Store at -20°C. Avoid freeze / thaw cycles. Buffer: PBS with 0.02% sodium azide, 50% glycerol, pH7.3.

Product Images



Western blot analysis of extracts of various cell lines, using SLC44A4 antibody (CAB10435) at 1:1000 dilution. Secondary antibody: HRP Goat Anti-Rabbit IgG (H+L) (CABS014) at 1:10000 dilution. Lysates/proteins: 25ug per lane. Blocking buffer: 3% nonfat dry milk in TBST. Detection: ECL Basic Kit (CABM00020). Exposure time: 5s.