

SLC4A5 Rabbit Polyclonal Antibody



CAB10436

Product Information

Size:

20uL, 50uL, 100uL, 200uL

Observed MW:

110kDa

Calculated MW:

107-126kDa

Applications:

WB IHC

Reactivity:

Human, Mouse, Rat

Antibody Information

Recommended dilutions:

WB 1:500 - 1:2000 IHC 1:50
- 1:200

Source:

Rabbit

Isotype:

IgG

Purification:

Affinity purification

Protein Background

This gene encodes a member of the sodium bicarbonate cotransporter (NBC) family, part of the bicarbonate transporter superfamily. Sodium bicarbonate cotransporters are involved in intracellular pH regulation and electroneutral or electrogenic sodium bicarbonate transport. This protein is thought to be an integral membrane protein. Multiple transcript variants encoding different isoforms have been found for this gene, but the biological validity of some variants has not been determined.

Immunogen information

Gene ID:

57835

Uniprot

Q9BY07

Synonyms:

SLC4A5; NBC4; NBCe2

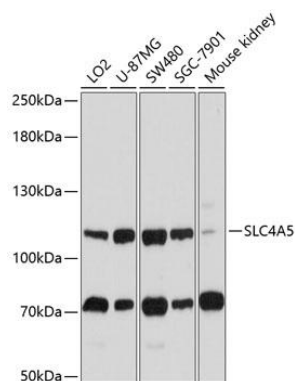
Immunogen:

Recombinant fusion protein containing a sequence corresponding to amino acids 1042-1121 of human SLC4A5 (NP_597812.1).

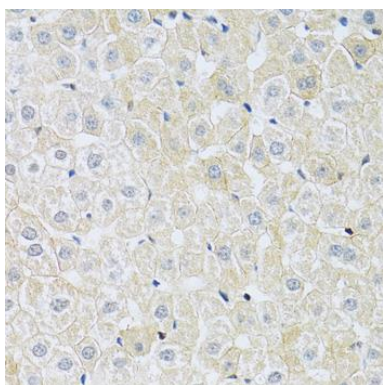
Storage:

Store at -20°C. Avoid freeze / thaw cycles. Buffer: PBS with 0.02% sodium azide, 50% glycerol, pH7.3.

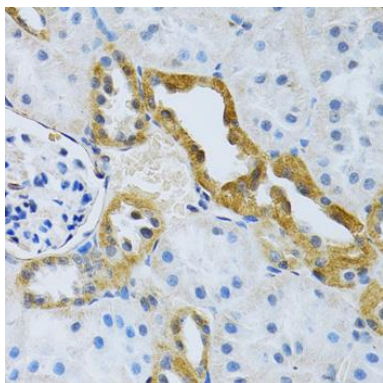
Product Images



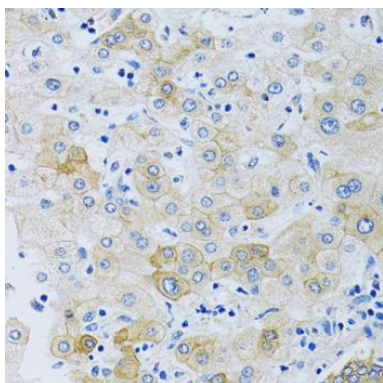
Western blot analysis of extracts of various cell lines, using SLC4A5 antibody (CAB10436) at 1:1000 dilution. Secondary antibody: HRP Goat Anti-Rabbit IgG (H+L) (CABS014) at 1:10000 dilution. Lysates/proteins: 25ug per lane. Blocking buffer: 3% nonfat dry milk in TBST. Detection: ECL Basic Kit (CABM00020). Exposure time: 15s.



Immunohistochemistry of paraffin-embedded rat liver using SLC4A5 antibody (CAB10436) at dilution of 1:100 (40x lens).



Immunohistochemistry of paraffin-embedded rat kidney using SLC4A5 antibody (CAB10436) at dilution of 1:100 (40x lens).



Immunohistochemistry of paraffin-embedded human liver using SLC4A5 antibody (CAB10436) at dilution of 1:100 (40x lens).