

# ADAM10 Rabbit Polyclonal Antibody



CAB10438

---

## Product Information

### Size:

20uL, 50uL, 100uL, 200uL

### Observed MW:

70kDa/105kDa

### Calculated MW:

49kDa/84kDa

### Applications:

WB IF

### Reactivity:

Human, Mouse, Rat

## Protein Background

Members of the ADAM family are cell surface proteins with a unique structure possessing both potential adhesion and protease domains. This gene encodes an ADAM family member that cleaves many proteins including TNF-alpha and E-cadherin. Alternate splicing results in multiple transcript variants encoding different proteins that may undergo similar processing.

## Immunogen information

### Gene ID:

102

### Uniprot

O14672

### Synonyms:

ADAM10; AD10; AD18; CD156c; CDw156; HsT18717; MADM; RAK; kuz

## Antibody Information

### Recommended dilutions:

WB 1:500 - 1:2000 IF 1:50 - 1:200

### Source:

Rabbit

### Isotype:

IgG

### Purification:

Affinity purification

### Immunogen:

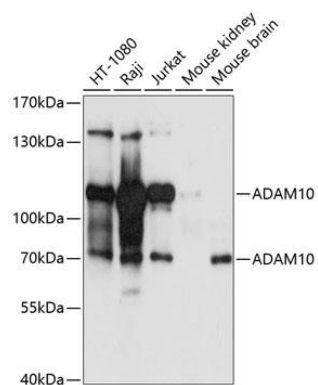
Recombinant fusion protein containing a sequence corresponding to amino acids 214-500 of human ADAM10 (NP\_001101.1).

### Storage:

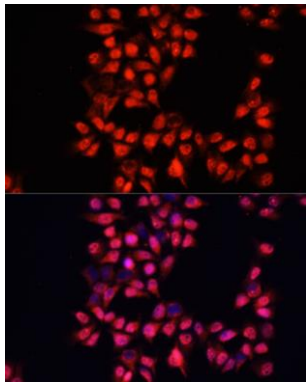
Store at -20°C. Avoid freeze / thaw cycles. Buffer: PBS with 0.02% sodium azide, 50% glycerol, pH7.3.

## Product Images

---



Western blot analysis of extracts of various cell lines, using ADAM10 antibody (CAB10438) at 1:1000 dilution. Secondary antibody: HRP Goat Anti-Rabbit IgG (H+L) (CABS014) at 1:10000 dilution. Lysates/proteins: 25ug per lane. Blocking buffer: 3% nonfat dry milk in TBST. Detection: ECL Basic Kit (CABM00020). Exposure time: 30s.



Immunofluorescence analysis of HeLa cells using ADAM10 antibody (CAB10438) at dilution of 1:100. Blue: DAPI for nuclear staining.