

TYMS Rabbit Polyclonal Antibody



CAB10441

Product Information

Size:

20uL, 50uL, 100uL, 200uL

Observed MW:

36kDa

Calculated MW:

26kDa/31kDa/35kDa

Applications:

WB IHC IF

Reactivity:

Human, Mouse, Rat

Antibody Information

Recommended dilutions:

WB 1:500 - 1:2000 IHC 1:50
- 1:200 IF 1:50 - 1:200

Source:

Rabbit

Isotype:

IgG

Purification:

Affinity purification

Protein Background

Thymidylate synthase catalyzes the methylation of deoxyuridylate to deoxythymidylate using 5, 10-methylenetetrahydrofolate (methylene-THF) as a cofactor. This function maintains the dTMP (thymidine-5-prime monophosphate) pool critical for DNA replication and repair. The enzyme has been of interest as a target for cancer chemotherapeutic agents. It is considered to be the primary site of action for 5-fluorouracil, 5-fluoro-2-prime-deoxyuridine, and some folate analogs. Expression of this gene and that of a naturally occurring antisense transcript rTSalpha (GeneID:55556) vary inversely when cell-growth progresses from late-log to plateau phase.

Immunogen information

Gene ID:

7298

Uniprot

P04818

Synonyms:

TYMS; HST422; TMS; TS

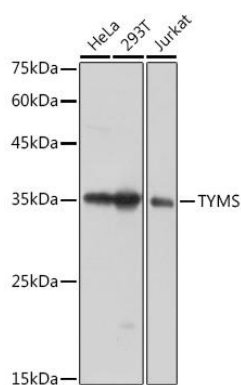
Immunogen:

Recombinant fusion protein containing a sequence corresponding to amino acids 1-313 of human TYMS (NP_001062.1).

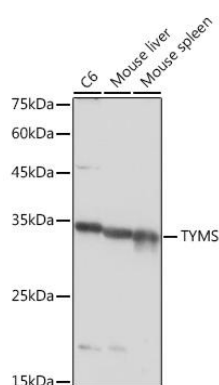
Storage:

Store at -20°C. Avoid freeze / thaw cycles. Buffer: PBS with 0.02% sodium azide, 50% glycerol, pH7.3.

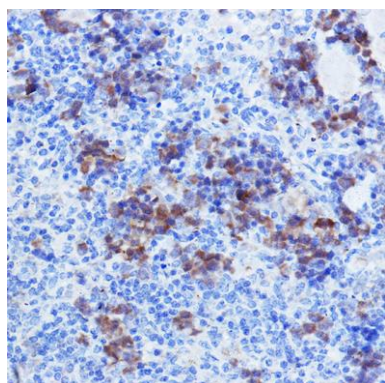
Product Images



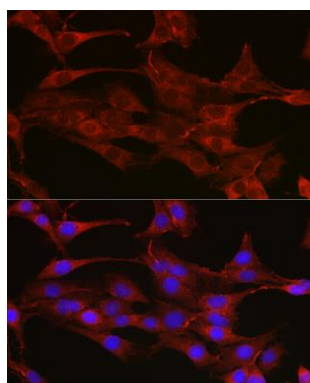
Western blot analysis of extracts of various cell lines, using TYMS antibody (CAB10441) at 1:1000 dilution. Secondary antibody: HRP Goat Anti-Rabbit IgG (H+L) (CABS014) at 1:10000 dilution. Lysates/proteins: 25ug per lane. Blocking buffer: 3% nonfat dry milk in TBST. Detection: ECL Enhanced Kit (RM00026). Exposure time: 1s.



Western blot analysis of extracts of various cell lines, using TYMS antibody (CAB10441) at 1:1000 dilution. Secondary antibody: HRP Goat Anti-Rabbit IgG (H+L) (CABS014) at 1:10000 dilution. Lysates/proteins: 25ug per lane. Blocking buffer: 3% nonfat dry milk in TBST. Detection: ECL Basic Kit (CABM00020). Exposure time: 10s.



Immunohistochemistry of paraffin-embedded mouse spleen using TYMS Rabbit pAb (CAB10441) at dilution of 1:100 (40x lens).



Immunofluorescence analysis of C6 cells using TYMS Rabbit pAb (CAB10441) at dilution of 1:100 (40x lens). Blue: DAPI for nuclear staining.