

# STX2 Rabbit Polyclonal Antibody



**CAB10444**

---

## Product Information

### Size:

20uL, 50uL, 100uL, 200uL

### Observed MW:

36kDa

### Calculated MW:

32kDa/33kDa

### Applications:

WB IF

### Reactivity:

Human, Mouse, Rat

## Protein Background

The product of this gene belongs to the syntaxin/epimorphin family of proteins. The syntaxins are a large protein family implicated in the targeting and fusion of intracellular transport vesicles. The product of this gene regulates epithelial-mesenchymal interactions and epithelial cell morphogenesis and activation. Alternatively spliced transcript variants encoding different isoforms have been identified.

## Immunogen information

### Gene ID:

2054

### Uniprot

P32856

### Synonyms:

STX2; EPIM; EPM; STX2A; STX2B; STX2C

## Antibody Information

### Recommended dilutions:

WB 1:500 - 1:2000 IF 1:50 - 1:200

### Source:

Rabbit

### Isotype:

IgG

### Purification:

Affinity purification

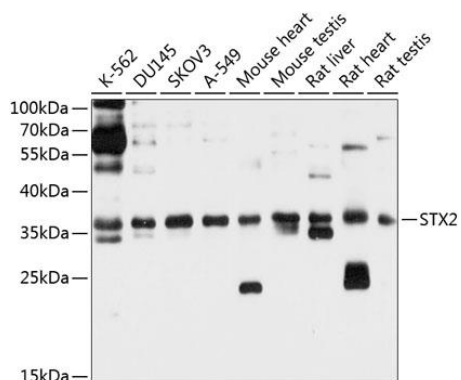
### Immunogen:

Recombinant fusion protein containing a sequence corresponding to amino acids 1-264 of human STX2 (NP\_001971.2).

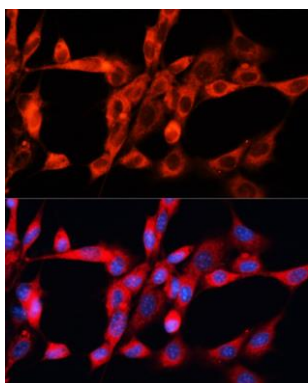
### Storage:

Store at -20°C. Avoid freeze / thaw cycles. Buffer: PBS with 0.02% sodium azide, 50% glycerol, pH7.3.

## Product Images



Western blot analysis of extracts of various cell lines, using STX2 antibody (CAB10444) at 1:1000 dilution. Secondary antibody: HRP Goat Anti-Rabbit IgG (H+L) (CABS014) at 1:10000 dilution. Lysates/proteins: 25ug per lane. Blocking buffer: 3% nonfat dry milk in TBST. Detection: ECL Basic Kit (CABM00020). Exposure time: 10s.



Immunofluorescence analysis of NIH/3T3 cells using STX2 antibody (CAB10444) at dilution of 1:100. Blue: DAPI for nuclear staining.