

# COLQ Rabbit Polyclonal Antibody



**CAB10448**

---

## Product Information

### Size:

20uL, 50uL, 100uL, 200uL

### Observed MW:

48kDa

### Calculated MW:

28kDa/30kDa/33kDa/44kDa/  
46kDa/47kDa

### Applications:

WB

### Reactivity:

Mouse, Rat

## Antibody Information

### Recommended dilutions:

WB 1:500 - 1:2000

### Source:

Rabbit

### Isotype:

IgG

### Purification:

Affinity purification

## Protein Background

This gene encodes the subunit of a collagen-like molecule associated with acetylcholinesterase in skeletal muscle. Each molecule is composed of three identical subunits. Each subunit contains a proline-rich attachment domain (PRAD) that binds an acetylcholinesterase tetramer to anchor the catalytic subunit of the enzyme to the basal lamina. Mutations in this gene are associated with endplate acetylcholinesterase deficiency. Multiple transcript variants encoding different isoforms have been found for this gene.

## Immunogen information

### Gene ID:

8292

### Uniprot

Q9Y215

### Synonyms:

COLQ; CMS5; EAD

### Immunogen:

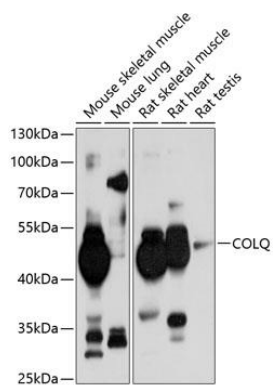
Recombinant fusion protein containing a sequence corresponding to amino acids 276-455 of human COLQ (NP\_005668.2).

### Storage:

Store at -20°C. Avoid freeze / thaw cycles. Buffer: PBS with 0.02% sodium azide, 50% glycerol, pH7.3.

## Product Images

---



Western blot analysis of extracts of various cell lines, using COLQ antibody (CAB10448) at 1:1000 dilution. Secondary antibody: HRP Goat Anti-Rabbit IgG (H+L) (CABS014) at 1:10000 dilution. Lysates/proteins: 25ug per lane. Blocking buffer: 3% nonfat dry milk in TBST. Detection: ECL Basic Kit (CABM00020). Exposure time: 15s.