

EXOSC2 Rabbit Polyclonal Antibody



CAB10450

Product Information

Size:

20uL, 50uL, 100uL, 200uL

Observed MW:

33kDa

Calculated MW:

29kDa/30kDa/32kDa

Applications:

WB IF

Reactivity:

Human, Mouse, Rat

Antibody Information

Recommended dilutions:

WB 1:500 - 1:2000 IF 1:50 - 1:200

Source:

Rabbit

Isotype:

IgG

Purification:

Affinity purification

Protein Background

Immunogen information

Gene ID:

23404

Uniprot

Q13868

Synonyms:

EXOSC2; RRP4; Rrp4p; hRrp4p; p7

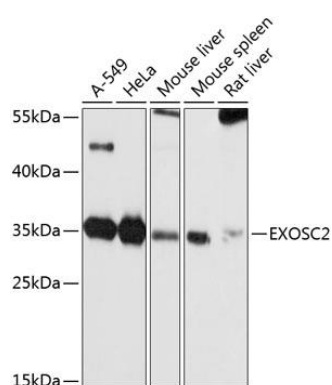
Immunogen:

Recombinant fusion protein containing a sequence corresponding to amino acids 1-293 of human EXOSC2 (NP_055100.2).

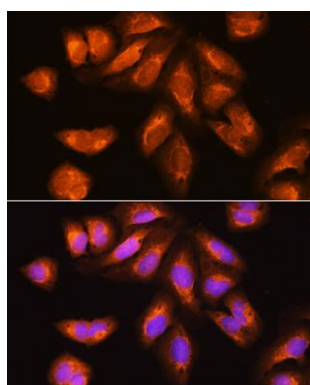
Storage:

Store at -20°C. Avoid freeze / thaw cycles. Buffer: PBS with 0.02% sodium azide, 50% glycerol, pH7.3.

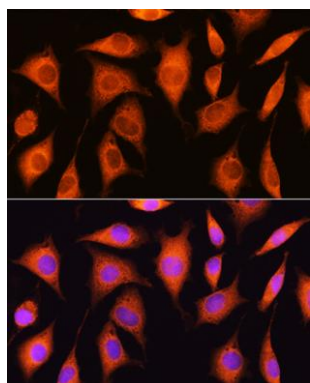
Product Images



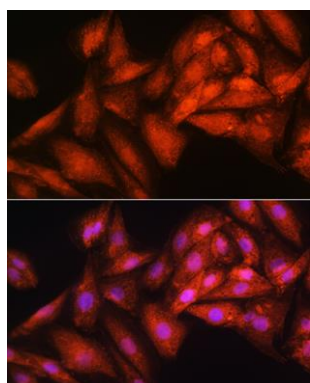
Western blot analysis of extracts of various cell lines, using EXOSC2 antibody (CAB10450) at 1:1000 dilution. Secondary antibody: HRP Goat Anti-Rabbit IgG (H+L) (CABS014) at 1:10000 dilution. Lysates/proteins: 25ug per lane. Blocking buffer: 3% nonfat dry milk in TBST. Detection: ECL Basic Kit (CABM00020). Exposure time: 5s.



Immunofluorescence analysis of U2OS cells using EXOSC2 Rabbit pAb (CAB10450) at dilution of 1:100. Blue: DAPI for nuclear staining.



Immunofluorescence analysis of L929 cells using EXOSC2 Rabbit pAb (CAB10450) at dilution of 1:100. Blue: DAPI for nuclear staining.



Immunofluorescence analysis of H9C2 cells using EXOSC2 Rabbit pAb (CAB10450) at dilution of 1:100. Blue: DAPI for nuclear staining.