

FCRL3 Rabbit Polyclonal Antibody



CAB10452

Product Information

Size:

20uL, 50uL, 100uL, 200uL

Observed MW:

81kDa

Calculated MW:

21kDa/22kDa/69kDa/77kDa/
80kDa/81kDa

Applications:

WB IHC

Reactivity:

Human, Mouse, Rat

Protein Background

This gene encodes a member of the immunoglobulin receptor superfamily and is one of several Fc receptor-like glycoproteins clustered on the long arm of chromosome 1. The encoded protein contains immunoreceptor-tyrosine activation motifs and immunoreceptor-tyrosine inhibitory motifs in its cytoplasmic domain and may play a role in regulation of the immune system. Mutations in this gene have been associated with rheumatoid arthritis, autoimmune thyroid disease, and systemic lupus erythematosus. Alternative splicing results in multiple transcript variants.

Immunogen information

Gene ID:

115352

Uniprot

Q96P31

Synonyms:

FCRL3; CD307c; FCRH3; IFGP3; IRTA3; SPAP2

Antibody Information

Recommended dilutions:

WB 1:500 - 1:2000 IHC
1:100 - 1:200

Source:

Rabbit

Isotype:

IgG

Purification:

Affinity purification

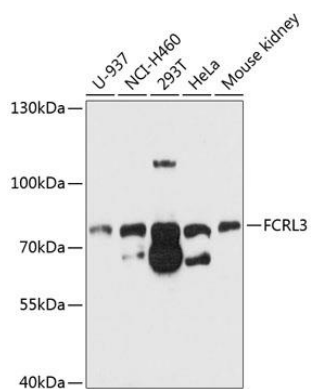
Immunogen:

Recombinant fusion protein containing a sequence corresponding to amino acids 18-180 of human FCRL3 (NP_443171.2).

Storage:

Store at -20°C. Avoid freeze / thaw cycles. Buffer: PBS with 0.02% sodium azide, 50% glycerol, pH7.3.

Product Images



Western blot analysis of extracts of various cell lines, using FCRL3 antibody (CAB10452) at 1:1000 dilution. Secondary antibody: HRP Goat Anti-Rabbit IgG (H+L) (CABS014) at 1:10000 dilution. Lysates/proteins: 25ug per lane. Blocking buffer: 3% nonfat dry milk in TBST. Detection: ECL Basic Kit (CABM00020). Exposure time: 30s.