

PDE1A Rabbit Polyclonal Antibody



CAB10457

Product Information

Size:

20uL, 50uL, 100uL, 200uL

Observed MW:

55kDa

Calculated MW:

57kDa/58kDa/59kDa/60kDa/
61kDa/62kDa/63kDa

Applications:

WB

Reactivity:

Human, Mouse, Rat

Antibody Information

Recommended dilutions:

WB 1:500 - 1:2000

Source:

Rabbit

Isotype:

IgG

Purification:

Affinity purification

Protein Background

Immunogen information

Gene ID:

5136

Uniprot

P54750

Synonyms:

PDE1A; CAM-PDE-1A; HCAM-1; HCAM1; HSPDE1A

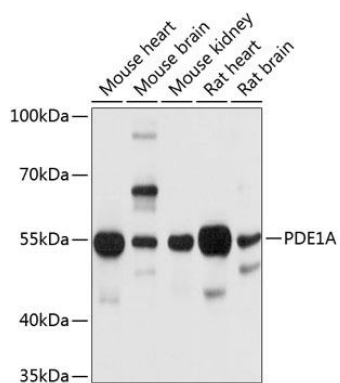
Immunogen:

Recombinant fusion protein containing a sequence corresponding to amino acids 446-545 of human PDE1A (NP_005010.2).

Storage:

Store at -20°C. Avoid freeze / thaw cycles. Buffer: PBS with 0.02% sodium azide, 50% glycerol, pH7.3.

Product Images



Western blot analysis of extracts of various cell lines, using PDE1A antibody (CAB10457) at 1:1000 dilution. Secondary antibody: HRP Goat Anti-Rabbit IgG (H+L) (CABS014) at 1:10000 dilution. Lysates/proteins: 25ug per lane. Blocking buffer: 3% nonfat dry milk in TBST. Detection: ECL Basic Kit (CABM00020). Exposure time: 10s.