

# PEX6 Rabbit Polyclonal Antibody



CAB10459

---

## Product Information

### Size:

20uL, 50uL, 100uL, 200uL

### Observed MW:

104kDa

### Calculated MW:

77kDa/94kDa/104kDa

### Applications:

WB

### Reactivity:

Human, Mouse, Rat

## Protein Background

This gene encodes a member of the AAA (ATPases associated with diverse cellular activities) family of ATPases. This member is a predominantly cytoplasmic protein, which plays a direct role in peroxisomal protein import and is required for PTS1 (peroxisomal targeting signal 1, a C-terminal tripeptide of the sequence ser-lys-leu) receptor activity. Mutations in this gene cause peroxisome biogenesis disorders of complementation group 4 and complementation group 6. Several transcript variants encoding different isoforms have been found for this gene.

## Immunogen information

### Gene ID:

5190

### Uniprot

Q13608

### Synonyms:

PEX6; HMLR2; PAF-2; PAF2; PBD4A; PDB4B; PXAAA1

## Antibody Information

### Recommended dilutions:

WB 1:500 - 1:2000

### Source:

Rabbit

### Isotype:

IgG

### Purification:

Affinity purification

### Immunogen:

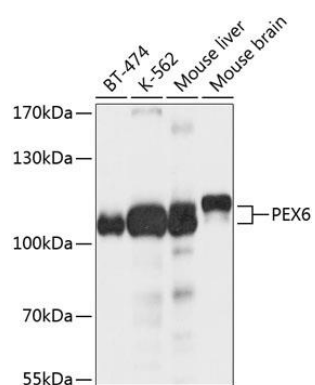
Recombinant fusion protein containing a sequence corresponding to amino acids 741-980 of human PEX6 (NP\_000278.3).

### Storage:

Store at -20°C. Avoid freeze / thaw cycles. Buffer: PBS with 0.02% sodium azide, 50% glycerol, pH7.3.

## Product Images

---



Western blot analysis of extracts of various cell lines, using PEX6 antibody (CAB10459) at 1:1000 dilution. Secondary antibody: HRP Goat Anti-Rabbit IgG (H+L) (CABS014) at 1:10000 dilution. Lysates/proteins: 25ug per lane. Blocking buffer: 3% nonfat dry milk in TBST. Detection: ECL Basic Kit (CABM00020). Exposure time: 5s.