

# U2AF1 Rabbit Polyclonal Antibody



CAB1046

## Product Information

### Size:

20uL, 50uL, 100uL, 200uL

### Observed MW:

38kDa

### Calculated MW:

8kDa/19kDa/27kDa

### Applications:

WB IHC IF

### Reactivity:

Human, Mouse, Rat

## Protein Background

This gene belongs to the splicing factor SR family of genes. U2 auxiliary factor, comprising a large and a small subunit, is a non-snRNP protein required for the binding of U2 snRNP to the pre-mRNA branch site. This gene encodes the small subunit which plays a critical role in both constitutive and enhancer-dependent RNA splicing by directly mediating interactions between the large subunit and proteins bound to the enhancers. Alternatively spliced transcript variants encoding different isoforms have been identified.

## Immunogen information

### Gene ID:

7307

### Uniprot

Q01081

### Synonyms:

U2AF1; FP793; RN; RNU2AF1; U2AF35; U2AFBP

## Antibody Information

### Recommended dilutions:

WB 1:500 - 1:2000 IHC 1:50  
- 1:100 IF 1:50 - 1:100

### Source:

Rabbit

### Isotype:

IgG

### Purification:

Affinity purification

### Immunogen:

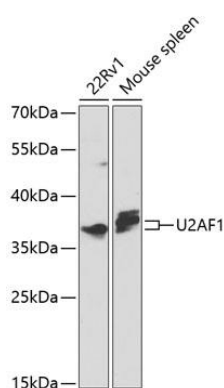
Recombinant fusion protein containing a sequence corresponding to amino acids 1-240 of human U2AF1 (NP\_006749.1).

### Storage:

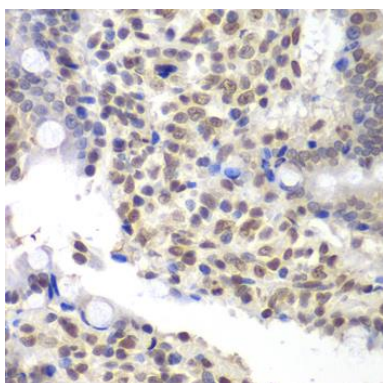
Store at -20°C. Avoid freeze / thaw cycles. Buffer: PBS with 0.02% sodium azide, 50% glycerol, pH7.3.

## Product Images

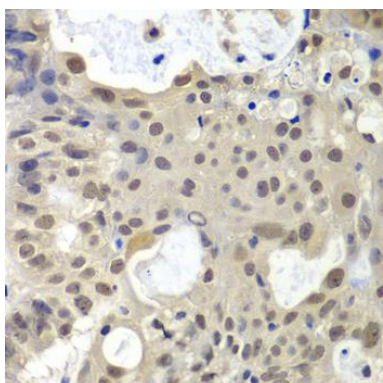
---



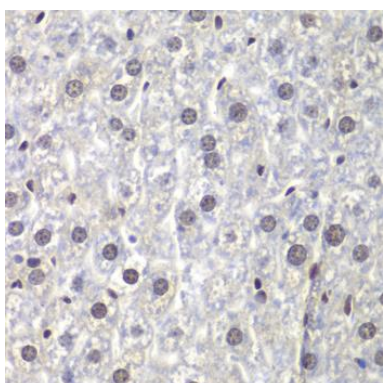
Western blot analysis of extracts of various cell lines, using U2AF1 antibody (CAB1046) at 1:1000 dilution. Secondary antibody: HRP Goat Anti-Rabbit IgG (H+L) (CABS014) at 1:10000 dilution. Lysates/proteins: 25ug per lane. Blocking buffer: 3% nonfat dry milk in TBST. Detection: ECL Basic Kit (CABM00020). Exposure time: 90s.



Immunohistochemistry of paraffin-embedded rat Intestine using U2AF1 antibody (CAB1046) at dilution of 1:200 (40x lens).



Immunohistochemistry of paraffin-embedded human oophoroma using U2AF1 antibody (CAB1046) at dilution of 1:200 (40x lens).



Immunohistochemistry of paraffin-embedded mouse liver using U2AF1 antibody (CAB1046) at dilution of 1:200 (40x lens).