

PRLHR Rabbit Polyclonal Antibody



CAB10479

Product Information

Size:

20uL, 50uL, 100uL, 200uL

Observed MW:

41kDa

Calculated MW:

41kDa

Applications:

WB

Reactivity:

Human, Mouse

Antibody Information

Recommended dilutions:

WB 1:500 - 1:1000

Source:

Rabbit

Isotype:

IgG

Purification:

Affinity purification

Protein Background

Immunogen information

Gene ID:

2834

Uniprot

P49683

Synonyms:

PRLHR; GPR10; GR3; PrRPR

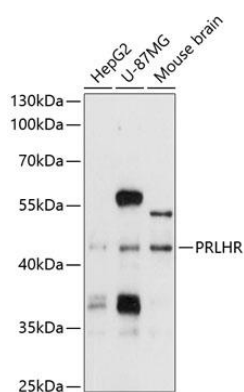
Immunogen:

Recombinant fusion protein containing a sequence corresponding to amino acids 1-70 of human PRLHR (NP_004239.1).

Storage:

Store at -20°C. Avoid freeze / thaw cycles. Buffer: PBS with 0.02% sodium azide, 50% glycerol, pH7.3.

Product Images



Western blot analysis of extracts of various cell lines, using PRLHR antibody (CAB10479) at 1:1000 dilution. Secondary antibody: HRP Goat Anti-Rabbit IgG (H+L) (CABS014) at 1:10000 dilution. Lysates/proteins: 25ug per lane. Blocking buffer: 3% nonfat dry milk in TBST. Detection: ECL Enhanced Kit (CABM00021). Exposure time: 30s.