

# MTAP Rabbit Polyclonal Antibody



CAB1049

## Product Information

### Size:

20uL, 50uL, 100uL, 200uL

### Observed MW:

31kDa

### Calculated MW:

26kDa/30kDa/31kDa/32kDa/  
33kDa/36kDa/38kDa

### Applications:

WB IHC IF

### Reactivity:

Human, Mouse, Rat

## Antibody Information

### Recommended dilutions:

WB 1:500 - 1:2000 IHC 1:50  
- 1:200 IF 1:50 - 1:200

### Source:

Rabbit

### Isotype:

IgG

### Purification:

Affinity purification

## Protein Background

This gene encodes an enzyme that plays a major role in polyamine metabolism and is important for the salvage of both adenine and methionine. The encoded enzyme is deficient in many cancers because this gene and the tumor suppressor p16 gene are co-deleted. Multiple alternatively spliced transcript variants have been described for this gene, but their full-length natures remain unknown.

## Immunogen information

### Gene ID:

4507

### Uniprot

Q13126

### Synonyms:

MTAP; BDMF; DMSFH; DMSMFH; HEL-249; LGMBF; MSAP; c86fus

### Immunogen:

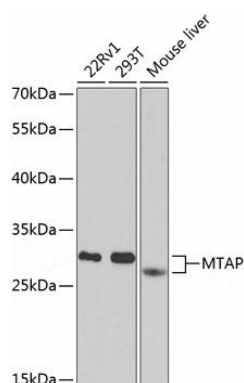
Recombinant fusion protein containing a sequence corresponding to amino acids 1-283 of human MTAP (NP\_002442.2).

### Storage:

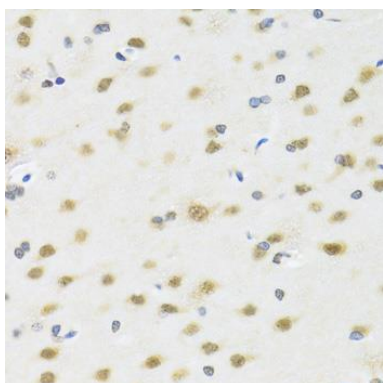
Store at -20°C. Avoid freeze / thaw cycles. Buffer: PBS with 0.02% sodium azide, 50% glycerol, pH7.3.

## Product Images

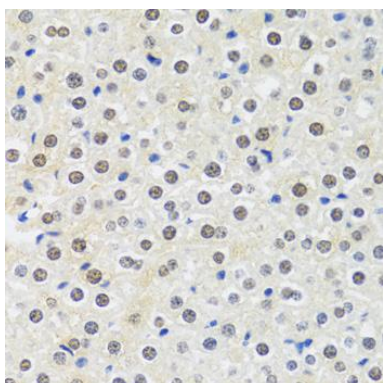
---



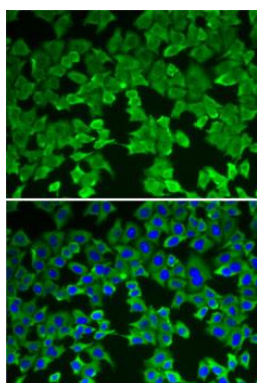
Western blot analysis of extracts of various cell lines, using MTAP antibody (CAB1049) at 1:1000 dilution. Secondary antibody: HRP Goat Anti-Rabbit IgG (H+L) (CABS014) at 1:10000 dilution. Lysates/proteins: 25ug per lane. Blocking buffer: 3% nonfat dry milk in TBST. Detection: ECL Basic Kit (CABM00020). Exposure time: 90s.



Immunohistochemistry of paraffin-embedded rat brain using MTAP antibody (CAB1049) at dilution of 1:100 (40x lens).



Immunohistochemistry of paraffin-embedded mouse liver using MTAP antibody (CAB1049) at dilution of 1:100 (40x lens).



Immunofluorescence analysis of A-549 cells using MTAP antibody (CAB1049). Blue: DAPI for nuclear staining.