

CLEC4G Rabbit Polyclonal Antibody



CAB10500

Product Information

Size:

20uL, 50uL, 100uL, 200uL

Observed MW:

38kDa

Calculated MW:

32kDa

Applications:

WB

Reactivity:

Human

Protein Background

This gene encodes a glycan-binding receptor and member of the C-type lectin family which plays a role in the T-cell immune response. Multiple transcript variants encoding different isoforms have been found for this gene.

Immunogen information

Gene ID:

339390

Uniprot

Q6UXB4

Synonyms:

CLEC4G; DTTR431; LP2698; LSEctin; UNQ431

Antibody Information

Recommended dilutions:

WB 1:500 - 1:1000

Source:

Rabbit

Isotype:

IgG

Purification:

Affinity purification

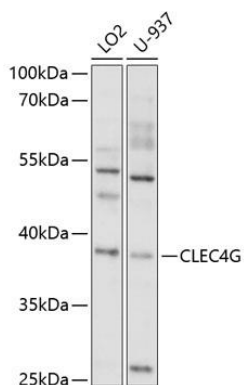
Immunogen:

Recombinant fusion protein containing a sequence corresponding to amino acids 54-293 of human CLEC4G (NP_940894.1).

Storage:

Store at -20°C. Avoid freeze / thaw cycles. Buffer: PBS with 0.02% sodium azide, 50% glycerol, pH7.3.

Product Images



Western blot analysis of extracts of various cell lines, using CLEC4G antibody (CAB10500) at 1:1000 dilution. Secondary antibody: HRP Goat Anti-Rabbit IgG (H+L) (CABS014) at 1:10000 dilution. Lysates/proteins: 25ug per lane. Blocking buffer: 3% nonfat dry milk in TBST. Detection: ECL Enhanced Kit (CABM00021). Exposure time: 90s.