

# FZD6 Rabbit Polyclonal Antibody



CAB10503

## Product Information

### Size:

20uL, 50uL, 100uL, 200uL

### Observed MW:

79kDa

### Calculated MW:

75kDa/79kDa

### Applications:

WB IHC

### Reactivity:

Mouse, Rat

## Antibody Information

### Recommended dilutions:

WB 1:1000 - 1:2000 IHC

1:50 - 1:200

### Source:

Rabbit

### Isotype:

IgG

### Purification:

Affinity purification

## Protein Background

This gene represents a member of the 'frizzled' gene family, which encode 7-transmembrane domain proteins that are receptors for Wnt signaling proteins. The protein encoded by this family member contains a signal peptide, a cysteine-rich domain in the N-terminal extracellular region, and seven transmembrane domains, but unlike other family members, this protein does not contain a C-terminal PDZ domain-binding motif. This protein functions as a negative regulator of the canonical Wnt/beta-catenin signaling cascade, thereby inhibiting the processes that trigger oncogenic transformation, cell proliferation, and inhibition of apoptosis. Alternative splicing results in multiple transcript variants, some of which do not encode a protein with a predicted signal peptide.

## Immunogen information

### Gene ID:

8323

### Uniprot

O60353

### Synonyms:

FZD6; FZ-6; FZ6; HFZ6; NDNC10

### Immunogen:

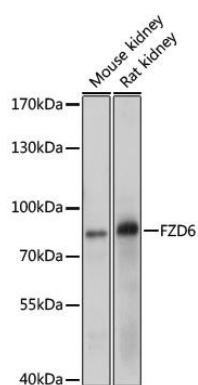
Recombinant fusion protein containing a sequence corresponding to amino acids 19-201 of human FZD6 (NP\_003497.2).

### Storage:

Store at -20°C. Avoid freeze / thaw cycles. Buffer: PBS with 0.02% sodium azide, 50% glycerol, pH7.3.

## Product Images

---



Western blot analysis of extracts of various cell line, using FZD6 antibody (CAB10503) at 1:1000 dilution. Secondary antibody: HRP Goat Anti-Rabbit IgG (H+L) (CABS014) at 1:10000 dilution. Lysates/proteins: 25ug per lane. Blocking buffer: 3% nonfat dry milk in TBST. Detection: ECL Basic Kit (CABM00020). Exposure time: 10s.